

For Research Use Only

ERAP2 Polyclonal antibody

Catalog Number: 14637-1-AP



Basic Information

Catalog Number:

14637-1-AP

Size:

170 µg/ml

Source:

Rabbit

Isotype:

IgG

Immunogen Catalog Number:

AG6216

GenBank Accession Number:

BC065240

GeneID (NCBI):

64167

UNIPROT ID:

Q6P179

Full Name:

endoplasmic reticulum

aminopeptidase 2

Calculated MW:

110 kDa

Observed MW:

61-65 kDa

Purification Method:

Antigen affinity purification

Recommended Dilutions:

WB 1:500-1:1000

IHC 1:50-1:500

IF/ICC 1:20-1:200

Applications

Tested Applications:

IF/ICC, IHC, WB, ELISA

Species Specificity:

human, mouse

Note-IHC: suggested antigen retrieval with TE buffer pH 9.0; (*) Alternatively, antigen retrieval may be performed with citrate buffer pH 6.0

Positive Controls:

WB: K-562 cells, A549 cells, mouse thymus tissue

IHC: human lung cancer tissue, human liver tissue

IF/ICC: HepG2 cells,

Background Information

ERAP2 (Endoplasmic reticulum aminopeptidase 2) is also named as LRAP (Leukocyte-derived arginine aminopeptidase) and belongs to the peptidase M1 family. It plays a central role in peptide trimming, a step required for the generation of most HLA class I-binding peptides. It can form heterodimers with ERAP1 (PMID:15908954). It has 4 isoforms produced by alternative splicing. And defects in the expression of this gene may cause improper antigen processing, possibly leading to favor tumor escape from the immune surveillance.

Storage

Storage:

Store at -20°C. Stable for one year after shipment.

Storage Buffer:

PBS with 0.02% sodium azide and 50% glycerol pH 7.3.

Aliquoting is unnecessary for -20°C storage

For technical support and original validation data for this product please contact:

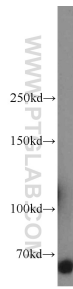
T: 4006900926

E: Proteintech-CN@ptglab.com

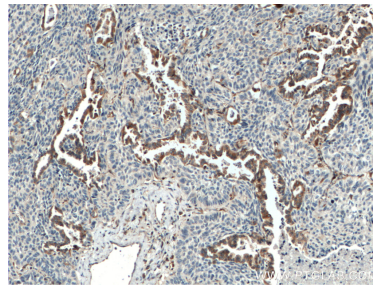
W: ptgcn.com

This product is exclusively available under Proteintech Group brand and is not available to purchase from any other manufacturer.

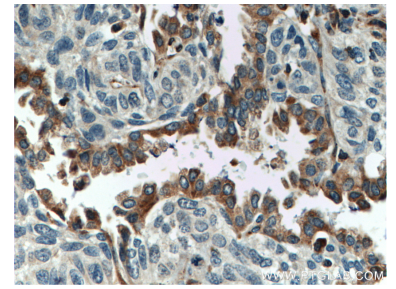
Selected Validation Data



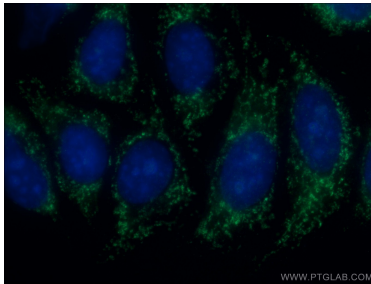
K-562 cells were subjected to SDS PAGE followed by western blot with 14637-1-AP (ERAP2 antibody) at dilution of 1:600 incubated at room temperature for 1.5 hours.



Immunohistochemical analysis of paraffin-embedded human lung cancer tissue slide using 14637-1-AP (ERAP2 antibody) at dilution of 1:50 (under 10x lens. Heat mediated antigen retrieval with Tris-EDTA buffer (pH 9.0).



Immunohistochemical analysis of paraffin-embedded human lung cancer tissue slide using 14637-1-AP (ERAP2 antibody) at dilution of 1:50 (under 40x lens. Heat mediated antigen retrieval with Tris-EDTA buffer (pH 9.0).



Immunofluorescent analysis of (-20°C Ethanol) fixed HepG2 cells using 14637-1-AP (ERAP2 antibody) at dilution of 1:50 and Alexa Fluor 488-conjugated AffiniPure Goat Anti-Rabbit IgG(H+L).