

TMPO/LAP2 Polyclonal antibody

Catalog Number: 14651-1-AP

Featured Product

7 Publications

Basic Information

Catalog Number:

14651-1-AP

Size:

350 µg/ml

Source:

Rabbit

Isotype:

IgG

Immunogen Catalog Number:

AG6247

GenBank Accession Number:

BC053675

GeneID (NCBI):

7112

UNIPROT ID:

P42167

Full Name:

thymopoietin

Calculated MW:

51 kDa

Observed MW:

75 kDa, 51 kDa and 39 kDa

Purification Method:

Antigen affinity purification

Recommended Dilutions:

WB 1:500-1:2000

IP 0.5-4.0 µg for 1.0-3.0 mg of total protein lysate

IHC 1:50-1:500

IF 1:200-1:800

Applications

Tested Applications:

IF/ICC, IHC, IP, WB, ELISA

Cited Applications:

WB, IF

Species Specificity:

human, rat, mouse

Cited Species:

human, mouse, bovine

Note-IHC: suggested antigen retrieval with TE buffer pH 9.0; (*) Alternatively, antigen retrieval may be performed with citrate buffer pH 6.0

Positive Controls:

WB : HEK-293 cells, HSC-T6 cells, HeLa cells, HepG2 cells, MCF-7 cells

IP : HeLa cells,

IHC : human breast cancer tissue, human liver tissue, mouse lung tissue, human liver cancer tissue, mouse brain tissue, rat brain tissue

IF : HeLa cells,

Background Information

TMPO resides in the nucleus and may play a role in the assembly of the nuclear lamina, and thus help maintain the structural organization of the nuclear envelope. It may function as a receptor for the attachment of lamin filaments to the inner nuclear membrane. TMPO gene encodes 3 thymopoietins: alpha (75 kD), beta (51 kD), and gamma (39 kD).

Notable Publications

Author	Pubmed ID	Journal	Application
Xiao Ma	34593235	J Dairy Sci	WB
Lin Zhang	27756319	World J Surg Oncol	WB
Yuhua Fu	26603343	Sci Rep	WB

Storage

Storage:

Store at -20°C. Stable for one year after shipment.

Storage Buffer:

PBS with 0.02% sodium azide and 50% glycerol pH 7.3.

Aliquoting is unnecessary for -20°C storage

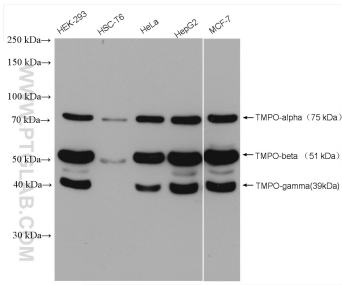
For technical support and original validation data for this product please contact:

T: 4006900926

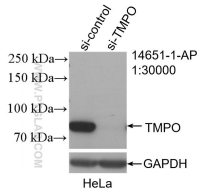
E: Proteintech-CN@ptglab.comW: ptgcn.com

This product is exclusively available under Proteintech Group brand and is not available to purchase from any other manufacturer.

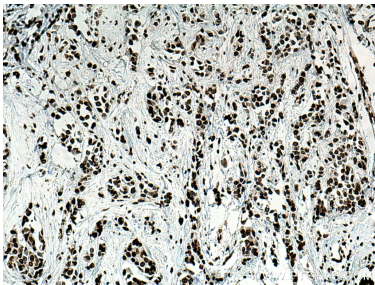
Selected Validation Data



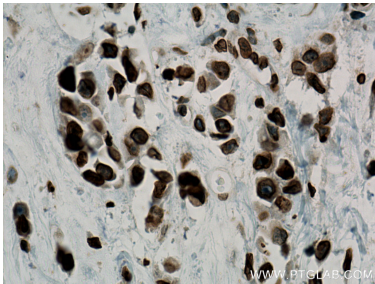
Various lysates were subjected to SDS PAGE followed by western blot with 14651-1-AP (TMPO/LAP2 antibody) at dilution of 1:1000 incubated at room temperature for 1.5 hours.



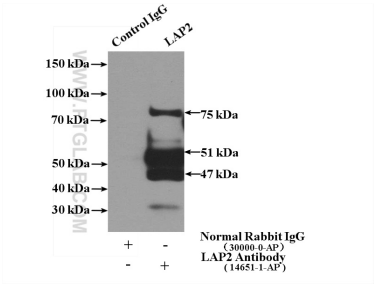
WB result of TMPO/LAP2 antibody (14651-1-AP; 1:30000; incubated at room temperature for 1.5 hours) with sh-Control and sh-TMPO/LAP2 transfected HeLa cells.



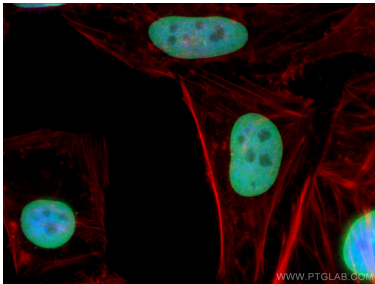
Immunohistochemical analysis of paraffin-embedded human breast cancer tissue slide using 14651-1-AP (TMPO/LAP2 antibody) at dilution of 1:200 (under 10x lens). Heat mediated antigen retrieval with Tris-EDTA buffer (pH 9.0).



Immunohistochemical analysis of paraffin-embedded human breast cancer tissue slide using 14651-1-AP (TMPO/LAP2 antibody) at dilution of 1:200 (under 40x lens). Heat mediated antigen retrieval with Tris-EDTA buffer (pH 9.0).



IP result of anti-TMPO/LAP2 (IP:14651-1-AP, 4ug; Detection:14651-1-AP 1:500) with HeLa cells lysate 1600ug.



Immunofluorescent analysis of (4% PFA) fixed HeLa cells using TMPO/LAP2 antibody (14651-1-AP) at dilution of 1:400 and CoraLite®488-Conjugated AffiniPure Goat Anti-Rabbit IgG(H+L), CL594-Phalloidin (red).