

For Research Use Only

IgG Kappa Light Chain Polyclonal antibody



Catalog Number: 14678-1-AP

12 Publications

Basic Information

Catalog Number: 14678-1-AP	GenBank Accession Number: BC030813	Purification Method: Antigen affinity purification
Size: 500 µg/ml	GeneID (NCBI): 50802	Recommended Dilutions: WB 1:500-1:2000 IHC 1:20-1:200
Source: Rabbit	Full Name: immunoglobulin kappa locus	
Isotype: IgG	Calculated MW: 26 kDa	
Immunogen Catalog Number: AG6389	Observed MW: 26 kDa	

Applications

Tested Applications:

IHC, WB, ELISA

Cited Applications:

WB, IP, IF, RIP, IHC, ChIP

Species Specificity:

human, mouse

Cited Species:

human, mouse, monkey

Note-IHC: suggested antigen retrieval with TE buffer pH 9.0; (*) Alternatively, antigen retrieval may be performed with citrate buffer pH 6.0

Positive Controls:

WB: human plasma tissue, human liver tissue, mouse skeletal muscle tissue

IHC: human spleen tissue, human heart tissue, human placenta tissue, human skin tissue, human testis tissue, mouse spleen tissue

Background Information

This antibody detects the light chain (Kappa) of human IgG.

Notable Publications

Author	Pubmed ID	Journal	Application
Wei Guo	36162205	EBioMedicine	IF
Lanjuan Shen	35333985	J Bone Miner Metab	RIP
Hyun-Jin Na	35294432	PLoS Genet	IHC

Storage

Storage:

Store at -20°C. Stable for one year after shipment.

Storage Buffer:

PBS with 0.02% sodium azide and 50% glycerol pH 7.3.

Aliquoting is unnecessary for -20°C storage

For technical support and original validation data for this product please contact:

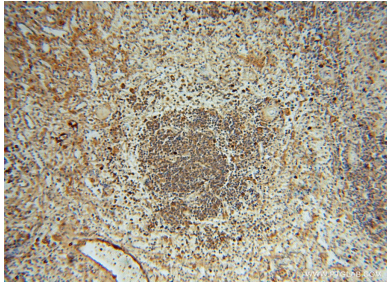
T: 4006900926

E: Proteintech-CN@ptglab.com

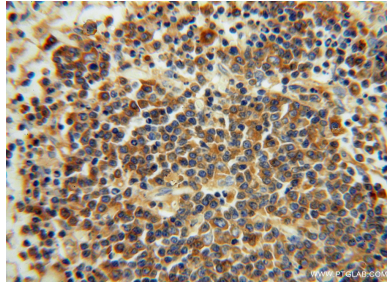
W: ptgcn.com

This product is exclusively available under Proteintech Group brand and is not available to purchase from any other manufacturer.

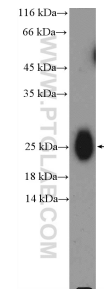
Selected Validation Data



Immunohistochemical analysis of paraffin-embedded human spleen using 14678-1-AP (IgG light chain (Kappa) antibody) at dilution of 1:100 (under 10x lens).



Immunohistochemical analysis of paraffin-embedded human spleen using 14678-1-AP (IgG light chain (Kappa) antibody) at dilution of 1:100 (under 40x lens).



human plasma (0.3ug) were subjected to SDS PAGE followed by western blot with 14678-1-AP (IgG light chain (Kappa) Antibody) at dilution of 1:1000 incubated at room temperature for 1.5 hours.