

For Research Use Only

CTMP Polyclonal antibody

Catalog Number: 14692-1-AP



Basic Information

Catalog Number:

14692-1-AP

Size:

633 µg/ml

Source:

Rabbit

Isotype:

IgG

Immunogen Catalog Number:

AG6244

GenBank Accession Number:

BC065277

GeneID (NCBI):

117145

UNIPROT ID:

Q5T1C6

Full Name:

thioesterase superfamily member 4

Calculated MW:

27 kDa

Observed MW:

26 kDa

Purification Method:

Antigen affinity purification

Recommended Dilutions:

WB 1:500-1:2000

IP 0.5-4.0 µg for 1.0-3.0 mg of total protein lysate

IHC 1:20-1:200

IF 1:20-1:200

Applications

Tested Applications:

IF/ICC, IHC, IP, WB, ELISA

Species Specificity:

human, mouse

Note-IHC: suggested antigen retrieval with TE buffer pH 9.0; (*) Alternatively, antigen retrieval may be performed with citrate buffer pH 6.0

Positive Controls:

WB : mouse brain tissue, HepG2 cells, mouse skeletal muscle tissue

IP : mouse brain tissue,

IHC : human endometrial cancer tissue,

IF : HeLa cells,

Background Information

Storage

Storage:

Store at -20°C. Stable for one year after shipment.

Storage Buffer:

PBS with 0.02% sodium azide and 50% glycerol pH 7.3.

Aliquoting is unnecessary for -20°C storage

For technical support and original validation data for this product please contact:

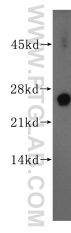
T: 4006900926

E: Proteintech-CN@ptglab.com

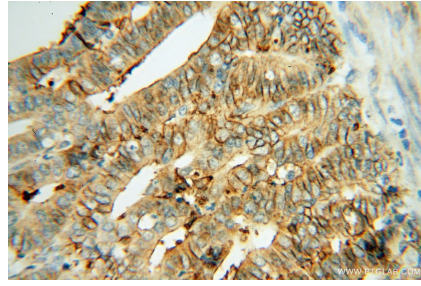
W: ptgcn.com

This product is exclusively available under Proteintech Group brand and is not available to purchase from any other manufacturer.

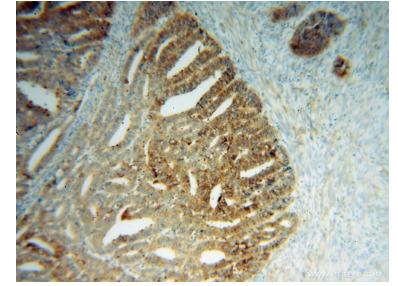
Selected Validation Data



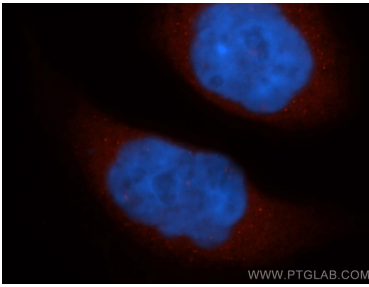
mouse brain tissue were subjected to SDS PAGE followed by western blot with 14692-1-AP (CTMP antibody) at dilution of 1:500 incubated at room temperature for 1.5 hours.



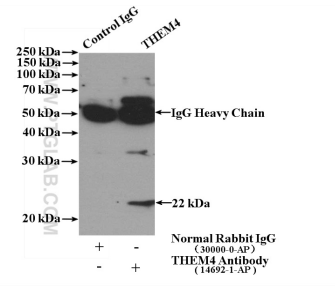
Immunohistochemical analysis of paraffin-embedded human endometrial cancer using 14692-1-AP (CTMP antibody) at dilution of 1:50 (under 40x lens).



Immunohistochemical analysis of paraffin-embedded human endometrial cancer using 14692-1-AP (CTMP antibody) at dilution of 1:50 (under 10x lens).



Immunofluorescent analysis of HeLa cells, using CTMP antibody 14692-1-AP at 1:50 dilution and Rhodamine-labeled goat anti-rabbit IgG (red). Blue pseudocolor = DAPI (fluorescent DNA dye).



IP result of anti-CTMP (IP:14692-1-AP, 4ug; Detection:14692-1-AP 1:500) with mouse brain tissue lysate 4000ug.