

For Research Use Only

RNMTL1 Polyclonal antibody

Catalog Number: 14707-1-AP

Featured Product

1 Publications



Basic Information

Catalog Number:

14707-1-AP

Size:

700 µg/ml

Source:

Rabbit

Isotype:

IgG

Immunogen Catalog Number:

AG6399

GenBank Accession Number:

BC050614

GeneID (NCBI):

55178

UNIPROT ID:

Q9HC36

Full Name:

RNA methyltransferase like 1

Calculated MW:

47 kDa

Observed MW:

47 kDa

Purification Method:

Antigen affinity purification

Recommended Dilutions:

WB 1:1000-1:5000

IHC 1:50-1:500

IF/ICC 1:200-1:800

Applications

Tested Applications:

WB, IHC, IF/ICC, ELISA

Cited Applications:

WB, IF

Species Specificity:

human

Cited Species:

human, mouse

Positive Controls:

WB : HeLa cells, HEK-293 cells

IHC : human liver tissue,

IF/ICC : HeLa cells,

Note-IHC: suggested antigen retrieval with TE buffer pH 9.0; (*) Alternatively, antigen retrieval may be performed with citrate buffer pH 6.0

Background Information

The RNA methyltransferase like 1 gene (RNMTL1) is one of thirteen newly discovered genes within a 116 Kb segment of the chromosome 17p13.3, which suffers from a high frequent loss of heterozygosity in human hepatocellular carcinoma. Its amino acid sequence was identified a high conserved region with methylases from various microorganisms, suggesting to have function to transfer methyl group to rRNA molecule [PMID:12296377].

Notable Publications

Author	Pubmed ID	Journal	Application
Lee Ken-Wing KW	24036117	J Biol Chem	WB,IF

Storage

Storage:

Store at -20°C. Stable for one year after shipment.

Storage Buffer:

PBS with 0.02% sodium azide and 50% glycerol pH 7.3.

Aliquoting is unnecessary for -20°C storage

For technical support and original validation data for this product please contact:

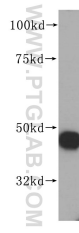
T: 4006900926

E: Proteintech-CN@ptglab.com

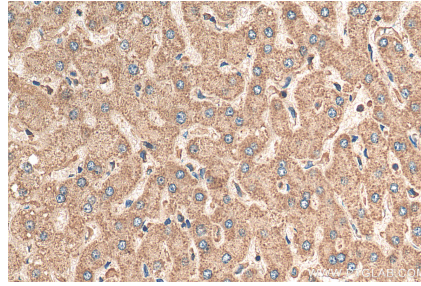
W: ptgcn.com

This product is exclusively available under Proteintech Group brand and is not available to purchase from any other manufacturer.

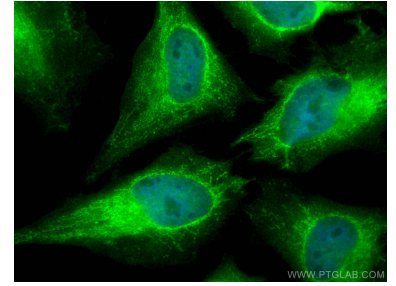
Selected Validation Data



HeLa cells were subjected to SDS PAGE followed by western blot with 14707-1-AP (RNMTL1 antibody) at dilution of 1:500 incubated at room temperature for 1.5 hours.



Immunohistochemical analysis of paraffin-embedded human liver tissue slide using 14707-1-AP (RNMTL1 antibody) at dilution of 1:200 (under 40x lens). Heat mediated antigen retrieval with Tris-EDTA buffer (pH 9.0).



Immunofluorescent analysis of (4% PFA) fixed HeLa cells using RNMTL1 antibody (14707-1-AP) at dilution of 1:400 and CoraLite®488-Conjugated AffiniPure Goat Anti-Rabbit IgG(H+L).