

For Research Use Only

MORF4L2 Polyclonal antibody

Catalog Number: 14710-1-AP **1 Publications**



Basic Information

Catalog Number:

14710-1-AP

Size:

700 µg/ml

Source:

Rabbit

Isotype:

IgG

Immunogen Catalog Number:

AG6404

GenBank Accession Number:

BC056899

GeneID (NCBI):

9643

UNIPROT ID:

Q15014

Full Name:

mortality factor 4 like 2

Calculated MW:

32 kDa

Observed MW:

30-32 kDa

Purification Method:

Antigen affinity purification

Recommended Dilutions:

WB 1:500-1:1000

IF/ICC 1:50-1:500

Applications

Tested Applications:

WB, IF/ICC, ELISA

Cited Applications:

IHC

Species Specificity:

human, mouse, rat

Cited Species:

human

Positive Controls:

WB : HeLa cells, human liver tissue, mouse liver tissue, A431 cells, A549 cells, MCF-7 cells

IF/ICC : MCF-7 cells, HeLa cells

Background Information

Notable Publications

Author	Pubmed ID	Journal	Application
Chunzhen Li	37033959	Front Immunol	IHC

Storage

Storage:

Store at -20°C. Stable for one year after shipment.

Storage Buffer:

PBS with 0.02% sodium azide and 50% glycerol pH 7.3.

Aliquoting is unnecessary for -20°C storage

For technical support and original validation data for this product please contact:

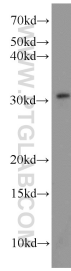
T: 4006900926

E: Proteintech-CN@ptglab.com

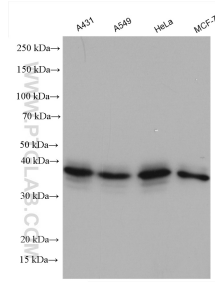
W: ptgcn.com

This product is exclusively available under Proteintech Group brand and is not available to purchase from any other manufacturer.

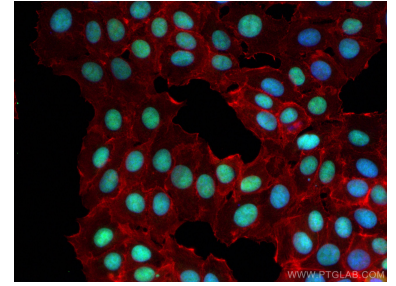
Selected Validation Data



HeLa cells were subjected to SDS PAGE followed by western blot with 14710-1-AP (MORF4L2 antibody) at dilution of 1:800 incubated at room temperature for 1.5 hours.



Various lysates were subjected to SDS PAGE followed by western blot with 14710-1-AP (MORF4L2 antibody) at dilution of 1:4000 incubated at room temperature for 1.5 hours.



Immunofluorescent analysis of (4% PFA) fixed MCF-7 cells using MORF4L2 antibody (14710-1-AP) at dilution of 1:200 and CoraLite®488-Conjugated AffiniPure Goat Anti-Rabbit IgG(H+L), CL594-Phalloidin (red).