

For Research Use Only

SEC11A Polyclonal antibody

Catalog Number:14753-1-AP

Featured Product

3 Publications



Basic Information

Catalog Number:

14753-1-AP

Size:

240 µg/ml

Source:

Rabbit

Isotype:

IgG

Immunogen Catalog Number:

AG6500

GenBank Accession Number:

BC000359

GeneID (NCBI):

23478

UNIPROT ID:

P67812

Full Name:

SEC11 homolog A (*S. cerevisiae*)

Calculated MW:

21 kDa

Observed MW:

17-21 kDa

Purification Method:

Antigen affinity purification

Recommended Dilutions:

WB 1:500-1:2000

IHC 1:20-1:200

Applications

Tested Applications:

IHC, WB, ELISA

Cited Applications:

WB

Species Specificity:

human, mouse, rat

Cited Species:

human

Note-IHC: suggested antigen retrieval with TE buffer pH 9.0; (*) Alternatively, antigen retrieval may be performed with citrate buffer pH 6.0

Positive Controls:

WB : mouse testis tissue, human colon tissue

IHC : human colon cancer tissue,

Background Information

SEC11A(Signal peptidase complex catalytic subunit SEC11A) is also named as SEC11L1, SPC18, SPCS4A and belongs to the peptidase S26B family. It is a component of the microsomal signal peptidase complex which removes signal peptides from nascent proteins as they are translocated into the lumen of the endoplasmic reticulum. SEC11A has some isoforms with the molecular mass of 17-21 kDa.

Notable Publications

Author	Pubmed ID	Journal	Application
Lifeng Yuan	29808012	Cell Res	WB
Rong Zhang	27383988	Nature	WB
Iqbal Dulloo	38183983	Mol Cell	WB

Storage

Storage:

Store at -20°C. Stable for one year after shipment.

Storage Buffer:

PBS with 0.02% sodium azide and 50% glycerol pH 7.3.

Aliquoting is unnecessary for -20°C storage

For technical support and original validation data for this product please contact:

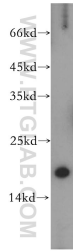
T: 4006900926

E: Proteintech-CN@ptglab.com

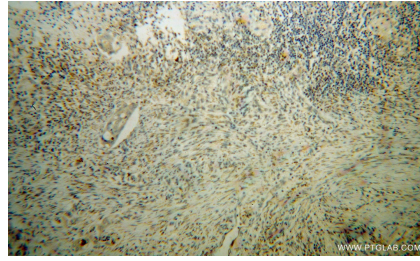
W: ptgcn.com

This product is exclusively available under Proteintech Group brand and is not available to purchase from any other manufacturer.

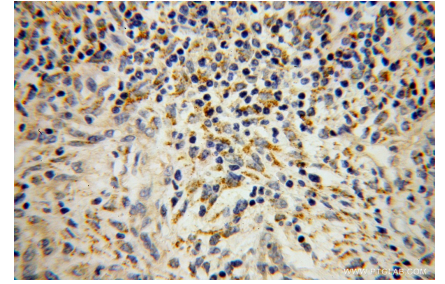
Selected Validation Data



mouse testis tissue were subjected to SDS PAGE followed by western blot with 14753-1-AP (SEC11A antibody) at dilution of 1:800 incubated at room temperature for 1.5 hours.



Immunohistochemical analysis of paraffin-embedded human colon cancer using 14753-1-AP (SEC11A antibody) at dilution of 1:100 (under 10x lens).



Immunohistochemical analysis of paraffin-embedded human colon cancer using 14753-1-AP (SEC11A antibody) at dilution of 1:100 (under 40x lens).