

For Research Use Only

# RPS24 Polyclonal antibody

Catalog Number: 14831-1-AP **4 Publications**



## Basic Information

<b>Catalog Number:</b> 14831-1-AP	<b>GenBank Accession Number:</b> BC000523	<b>Purification Method:</b> Antigen affinity purification
<b>Size:</b> 180 µg/ml	<b>GeneID (NCBI):</b> 6229	<b>Recommended Dilutions:</b> WB 1:200-1:1000 IF/ICC 1:20-1:200
<b>Source:</b> Rabbit	<b>UNIPROT ID:</b> P62847	
<b>Isotype:</b> IgG	<b>Full Name:</b> ribosomal protein S24	
<b>Immunogen Catalog Number:</b> AG6621	<b>Calculated MW:</b> 15 kDa	
	<b>Observed MW:</b> 18 kDa	

## Applications

<b>Tested Applications:</b> WB, IF/ICC, ELISA	<b>Positive Controls:</b> WB : SH-SY5Y cells, HEK-293 cells, HL-60 cells IF/ICC : SH-SY5Y cells,
<b>Cited Applications:</b> WB, IHC	
<b>Species Specificity:</b> human, mouse, rat	
<b>Cited Species:</b> human, mouse	

## Background Information

40S ribosomal protein S24 (RPS24) is a 133 amino acid protein, which belongs to the ribosomal protein S24e family. RPS24 is required for processing of pre-rRNA and maturation of 40S ribosomal subunits. RPS24 has an association with Diamond-Blackfan anemia 3.

## Notable Publications

Author	Pubmed ID	Journal	Application
Haiyuan Li	36614249	Int J Mol Sci	IHC
Guodong Cai	35395601	Ecotoxicol Environ Saf	WB
Maosheng Cheng	38619620	Cancer Immunol Immunother	IHC

## Storage

**Storage:**  
Store at -20°C. Stable for one year after shipment.  
**Storage Buffer:**  
PBS with 0.02% sodium azide and 50% glycerol pH 7.3.  
Aliquoting is unnecessary for -20°C storage

For technical support and original validation data for this product please contact:

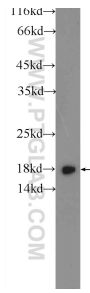
T: 4006900926

E: [Proteintech-CN@ptglab.com](mailto:Proteintech-CN@ptglab.com)

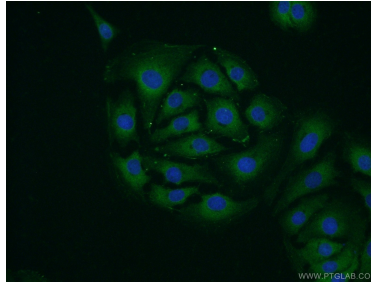
W: [ptgcn.com](http://ptgcn.com)

**This product is exclusively available under Proteintech Group brand and is not available to purchase from any other manufacturer.**

## Selected Validation Data



SH-SY5Y cells were subjected to SDS PAGE followed by western blot with 14831-1-AP (RPS24 Antibody) at dilution of 1:300 incubated at room temperature for 1.5 hours.



Immunofluorescent analysis of SH-SY5Y cells using 14831-1-AP (RPS24 antibody) at dilution of 1:50 and Alexa Fluor 488-conjugated AffiniPure Goat Anti-Rabbit IgG(H+L).