

For Research Use Only

# KLHL14-Specific Polyclonal antibody



Catalog Number: 14849-1-AP

Featured Product

1 Publications

## Basic Information

**Catalog Number:**

14849-1-AP

**Size:**

900 µg/ml

**Source:**

Rabbit

**Isotype:**

IgG

**GenBank Accession Number:**

NM\_020805

**GeneID (NCBI):**

57565

**UNIPROT ID:**

Q9P2G3

**Full Name:**

kelch-like 14 (Drosophila)

**Calculated MW:**

70 kDa

**Observed MW:**

39-45 kDa

**Purification Method:**

Antigen affinity purification

**Recommended Dilutions:**

WB 1:500-1:2000

IHC 1:20-1:200

IF/ICC 1:20-1:200

## Applications

**Tested Applications:**

WB, IHC, IF/ICC, ELISA

**Cited Applications:**

WB

**Species Specificity:**

human, mouse, rat

**Cited Species:**

human

**Note-IHC: suggested antigen retrieval with TE buffer pH 9.0; (\*) Alternatively, antigen retrieval may be performed with citrate buffer pH 6.0**

**Positive Controls:**

**WB:** HeLa cells, mouse heart tissue, mouse testis tissue, mouse lung tissue, mouse liver tissue, SH-SY5Y cells, mouse brain tissue, mouse ovary tissue, HepG2 cells, rat brain tissue

**IHC:** human heart tissue, human cervical cancer tissue

**IF/ICC:** HepG2 cells,

## Background Information

KLHL14, a member of the Kelch-like gene family, has six Kelch domains and is localized to the endoplasmic reticulum. KLHL14, a novel tumor suppressor, is a subunit of a ubiquitin ligase that associates with the endoplasmic reticulum-associated protein degradation (ERAD) machinery, regulating of B cell receptor-dependent NF-κB signaling (PMID: 32127472). KLHL14 has two isoforms of 70kDa and 43kDa.

## Notable Publications

Author	Pubmed ID	Journal	Application
Zheng Chen	33425096	Int J Clin Exp Pathol	WB

## Storage

**Storage:**

Store at -20°C. Stable for one year after shipment.

**Storage Buffer:**

PBS with 0.02% sodium azide and 50% glycerol pH 7.3.

Aliquoting is unnecessary for -20°C storage

For technical support and original validation data for this product please contact:

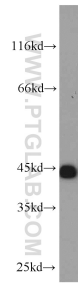
T: 4006900926

E: Proteintech-CN@ptglab.com

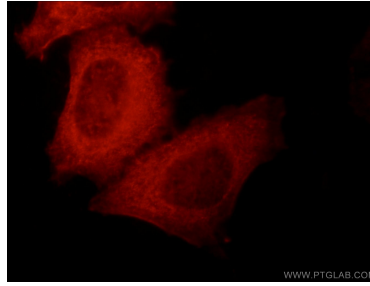
W: ptgcn.com

**This product is exclusively available under Proteintech Group brand and is not available to purchase from any other manufacturer.**

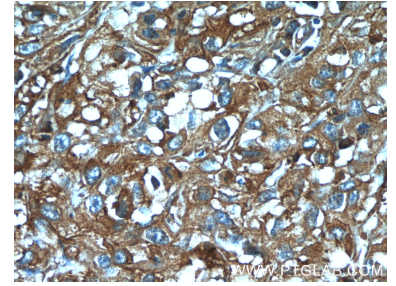
## Selected Validation Data



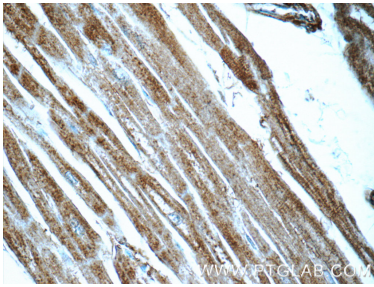
HeLa cells were subjected to SDS PAGE followed by western blot with 14849-1-AP (KLHL14-Specific antibody) at dilution of 1:1000 incubated at room temperature for 1.5 hours.



Immunofluorescent analysis of HepG2 cells, using KLHL14 antibody 14849-1-AP at 1:50 dilution and Rhodamine-labeled goat anti-rabbit IgG (red).



Immunohistochemical analysis of paraffin-embedded human cervical cancer tissue slide using 14849-1-AP (KLHL14-Specific Antibody) at dilution of 1:50 (under 40x lens).



Immunohistochemical analysis of paraffin-embedded human heart tissue slide using 14849-1-AP (KLHL14-Specific Antibody) at dilution of 1:50 (under 40x lens).