

For Research Use Only

# PSME3 Polyclonal antibody

Catalog Number: 14907-1-AP

Featured Product

6 Publications



## Basic Information

**Catalog Number:**

14907-1-AP

**Size:**

450 µg/ml

**Source:**

Rabbit

**Isotype:**

IgG

**Immunogen Catalog Number:**

AG6702

**GenBank Accession Number:**

BC001423

**GeneID (NCBI):**

10197

**UNIPROT ID:**

P61289

**Full Name:**

proteasome (prosome, macropain)  
activator subunit 3 (PA28 gamma; Ki)

**Calculated MW:**

30 kDa

**Observed MW:**

30 kDa

**Purification Method:**

Antigen affinity purification

**Recommended Dilutions:**

WB 1:1000-1:4000

IP 0.5-4.0 µg for 1.0-3.0 mg of total protein lysate

IHC 1:50-1:500

IF/ICC 1:10-1:100

## Applications

**Tested Applications:**

WB, IHC, IF/ICC, IP, ELISA

**Cited Applications:**

WB, IHC, IF

**Species Specificity:**

human, mouse, rat

**Cited Species:**

human

**Positive Controls:**

WB : COLO 320 cells, mouse spleen tissue, HepG2 cells, Caco-2 cells, HCT 116 cells

IP : COLO 320 cells,

IHC : human kidney tissue,

IF/ICC : HepG2 cells,

**Note-IHC: suggested antigen retrieval with TE buffer pH 9.0; (\*) Alternatively, antigen retrieval may be performed with citrate buffer pH 6.0**

## Background Information

PSME3 gene encodes proteasome activator complex subunit 3, which is also called REG-gamma or PA28-gamma. REG-gamma activates the trypsin-like catalytic subunit of the proteasome thus is a proteasome regulator. MDM2-TP53 interaction which promotes ubiquitination- and MDM2-dependent proteasomal degradation of TP53, may be promoted by REG-gamma resulting in inhibited apoptosis after DNA damage. REG-gamma may also be involved in cell cycle regulation.

## Notable Publications

Author	Pubmed ID	Journal	Application
Jiefang Guo	27756569	Cancer Lett	WB,IHC
Zhen Yu	35344764	EBioMedicine	IHC
Doueiri Rami R	22876852	Retrovirology	WB

## Storage

**Storage:**

Store at -20°C. Stable for one year after shipment.

**Storage Buffer:**

PBS with 0.02% sodium azide and 50% glycerol pH 7.3.

Aliquoting is unnecessary for -20°C storage

For technical support and original validation data for this product please contact:

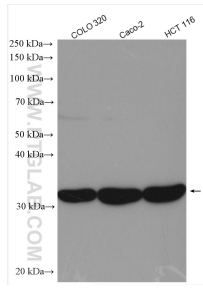
T: 4006900926

E: Proteintech-CN@ptglab.com

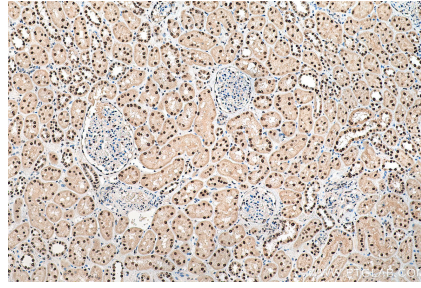
W: ptgcn.com

**This product is exclusively available under Proteintech Group brand and is not available to purchase from any other manufacturer.**

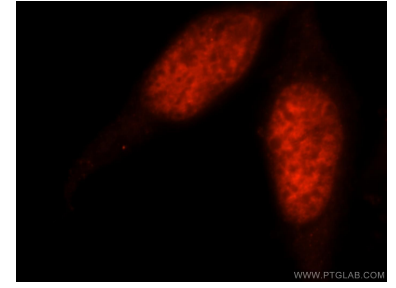
## Selected Validation Data



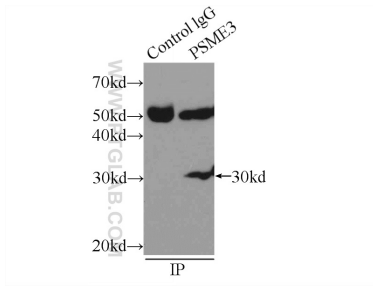
COLO 320 cells were subjected to SDS PAGE followed by western blot with 14907-1-AP (PSME3 antibody) at dilution of 1:2000 incubated at room temperature for 1.5 hours.



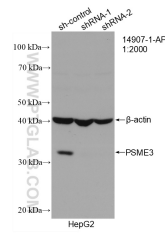
Immunohistochemical analysis of paraffin-embedded human kidney tissue slide using 14907-1-AP (PSME3 antibody) at dilution of 1:200 (under 10x lens). Heat mediated antigen retrieval with Tris-EDTA buffer (pH 9.0).



Immunofluorescent analysis of HepG2 cells, using PSME3 antibody 14907-1-AP at 1:25 dilution and Rhodamine-labeled goat anti-rabbit IgG (red).



IP result of anti-PSME3 (IP:14907-1-AP, 3ug; Detection:14907-1-AP 1:500) with COLO 320 cells lysate 2000ug.



WB result of PSME3 antibody (14907-1-AP; 1:2000; incubated at room temperature for 1.5 hours) with sh-Control and sh-PSME3 transfected HepG2 cells.