

For Research Use Only

MECR Polyclonal antibody

Catalog Number: 14932-1-AP

Featured Product

1 Publications



Basic Information

Catalog Number:

14932-1-AP

Size:

450 µg/ml

Source:

Rabbit

Isotype:

IgG

Immunogen Catalog Number:

AG6738

GenBank Accession Number:

BC001419

GeneID (NCBI):

51102

UNIPROT ID:

Q9BV79

Full Name:

mitochondrial trans-2-enoyl-CoA reductase

Calculated MW:

40 kDa

Observed MW:

37 kDa

Purification Method:

Antigen affinity purification

Recommended Dilutions:

WB 1:500-1:2400

IHC 1:50-1:500

IF/ICC 1:50-1:500

Applications

Tested Applications:

WB, IHC, IF/ICC, ELISA

Cited Applications:

WB

Species Specificity:

human, mouse, rat

Cited Species:

human, mouse, pig

Note-IHC: suggested antigen retrieval with TE buffer pH 9.0; (*) Alternatively, antigen retrieval may be performed with citrate buffer pH 6.0

Positive Controls:

WB : mouse heart tissue, human stomach tissue

IHC : human heart tissue,

IF/ICC : C2C12 cells, LNCaP cells

Background Information

Notable Publications

Author	Pubmed ID	Journal	Application
Steven F Baker	36542656	PLoS Biol	WB

Storage

Storage:

Store at -20°C. Stable for one year after shipment.

Storage Buffer:

PBS with 0.02% sodium azide and 50% glycerol pH 7.3.

Aliquoting is unnecessary for -20°C storage

For technical support and original validation data for this product please contact:

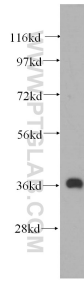
T: 4006900926

E: Proteintech-CN@ptglab.com

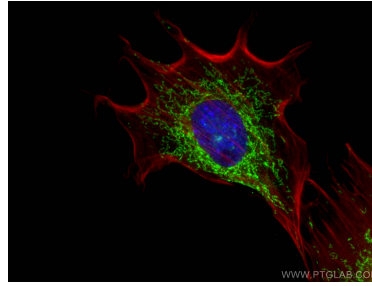
W: ptgcn.com

This product is exclusively available under Proteintech Group brand and is not available to purchase from any other manufacturer.

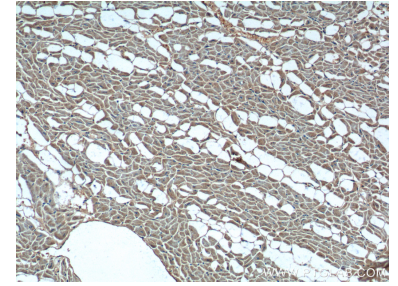
Selected Validation Data



mouse heart tissue were subjected to SDS PAGE followed by western blot with 14932-1-AP (MECR antibody) at dilution of 1:500 incubated at room temperature for 1.5 hours.



Immunofluorescent analysis of (4% PFA) fixed C2C12 cells using MECR antibody (14932-1-AP) at dilution of 1:200 and CoraLite®488-Conjugated AffiniPure Goat Anti-Rabbit IgG(H+L), CL594-Phalloidin (red).



Immunohistochemical analysis of paraffin-embedded human heart tissue slide using 14932-1-AP (MECR Antibody) at dilution of 1:200 (under 10x lens).