

For Research Use Only

SLC25A39 Polyclonal antibody

Catalog Number: 14963-1-AP **6 Publications**



Basic Information

Catalog Number: 14963-1-AP	GenBank Accession Number: BC001398	Purification Method: Antigen affinity purification
Size: 700 µg/ml	GeneID (NCBI): 51629	Recommended Dilutions: WB 1:500-1:1000
Source: Rabbit	UNIPROT ID: Q9BZJ4	
Isotype: IgG	Full Name: solute carrier family 25, member 39	
Immunogen Catalog Number: AG6825	Calculated MW: 39 kDa	
	Observed MW: 37-39 kDa	

Applications

Tested Applications: WB, ELISA	Positive Controls: WB : mouse brain tissue, rat brain tissue
Cited Applications: WB, IF	
Species Specificity: human, mouse, rat	
Cited Species: human, mouse	

Background Information

SLC25A39, a member of the mitochondrial carrier family, is a mitochondrial transporter for basic amino acids localized to mitochondria. SLC25A39 can be expressed in human testis, kidney, heart, brain, liver and spleen. It has been reported that SLC25A39 is essential for heme biosynthesis in mammals. SLC25A29 is associated with mitochondrial protein synthesis and amino acid degradation. (PMID: 19656490, 11139402, 24652292)

Notable Publications

Author	Pubmed ID	Journal	Application
Ying Wang	34707288	Nature	WB,IF
Xiaojian Shi	35513392	Nat Commun	WB
Wendy L. González-Alfonso	38676876	Biol Trace Elem Res	WB

Storage

Storage:
Store at -20°C. Stable for one year after shipment.
Storage Buffer:
PBS with 0.02% sodium azide and 50% glycerol pH 7.3.
Aliquoting is unnecessary for -20°C storage

For technical support and original validation data for this product please contact:

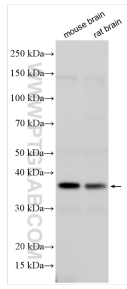
T: 4006900926

E: Proteintech-CN@ptglab.com

W: ptgcn.com

This product is exclusively available under Proteintech Group brand and is not available to purchase from any other manufacturer.

Selected Validation Data



Various lysates were subjected to SDS PAGE followed by western blot with 14963-1-AP (SLC25A39 antibody) at dilution of 1:500 incubated at room temperature for 1.5 hours.