

For Research Use Only

# PDCL3 Polyclonal antibody

Catalog Number: 14997-1-AP **1 Publications**



## Basic Information

Catalog Number:

14997-1-AP

Size:

200 µg/ml

Source:

Rabbit

Isotype:

IgG

Immunogen Catalog Number:

AG6983

GenBank Accession Number:

BC001021

GeneID (NCBI):

79031

UNIPROT ID:

Q9H2J4

Full Name:

phosducin-like 3

Calculated MW:

28 kDa

Observed MW:

35 kDa

Purification Method:

Antigen affinity purification

Recommended Dilutions:

WB 1:500-1:3000

IF 1:10-1:100

## Applications

Tested Applications:

IF/ICC, WB, ELISA

Cited Applications:

WB, IHC

Species Specificity:

human, mouse

Cited Species:

human

Positive Controls:

WB : A2780 cells, COLO 320 cells, MCF-7 cells

IF : HepG2 cells, MCF-7 cells, HeLa cells

## Background Information

### Notable Publications

Author	Pubmed ID	Journal	Application
Wenzhi Jin	38494503	Eur J Med Res	WB,IHC

## Storage

Storage:

Store at -20°C. Stable for one year after shipment.

Storage Buffer:

PBS with 0.02% sodium azide and 50% glycerol pH 7.3.

Aliquoting is unnecessary for -20°C storage

For technical support and original validation data for this product please contact:

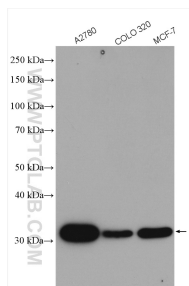
T: 4006900926

E: [Proteintech-CN@ptglab.com](mailto:Proteintech-CN@ptglab.com)

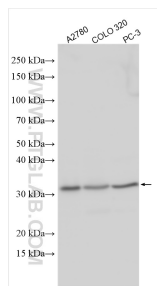
W: [ptgcn.com](http://ptgcn.com)

**This product is exclusively available under Proteintech Group brand and is not available to purchase from any other manufacturer.**

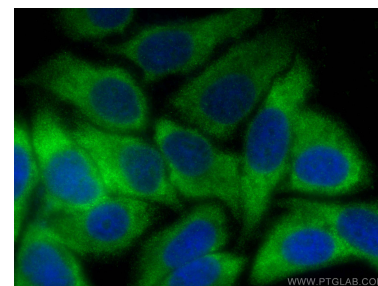
## Selected Validation Data



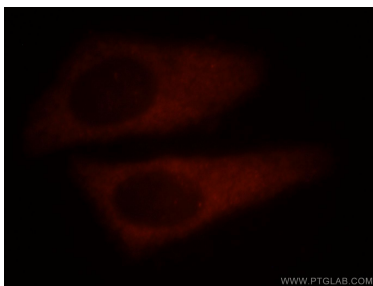
Various lysates were subjected to SDS PAGE followed by western blot with 14997-1-AP (PDCL3 antibody) at dilution of 1:1500 incubated at room temperature for 1.5 hours.



Various lysates were subjected to SDS PAGE followed by western blot with 14997-1-AP (PDCL3 antibody) at dilution of 1:3000 incubated at room temperature for 1.5 hours.



Immunofluorescent analysis of (-20°C Ethanol) fixed HepG2 cells using PDCL3 antibody (14997-1-AP) at dilution of 1:400 and CoraLite®488-Conjugated AffiniPure Goat Anti-Rabbit IgG(H+L).



Immunofluorescent analysis of HepG2 cells, using PDCL3 antibody 14997-1-AP at 1:25 dilution and Rhodamine-labeled goat anti-rabbit IgG (red).