

For Research Use Only

# PRSS2 Polyclonal antibody

Catalog Number: 15005-1-AP

Featured Product

4 Publications



## Basic Information

**Catalog Number:**

15005-1-AP

**Size:**

500 µg/ml

**Source:**

Rabbit

**Isotype:**

IgG

**Immunogen Catalog Number:**

AG6461

**GenBank Accession Number:**

BC030260

**GeneID (NCBI):**

5645

**UNIPROT ID:**

P07478

**Full Name:**

protease, serine, 2 (trypsin 2)

**Calculated MW:**

26 kDa

**Observed MW:**

26 kDa, 35 kDa

**Purification Method:**

Antigen affinity purification

**Recommended Dilutions:**

WB 1:500-1:3000

IHC 1:200-1:800

## Applications

**Tested Applications:**

WB, IHC, ELISA

**Cited Applications:**

WB, IHC

**Species Specificity:**

human, mouse, rat

**Cited Species:**

human, mouse

**Note-IHC: suggested antigen retrieval with TE buffer pH 9.0; (\*) Alternatively, antigen retrieval may be performed with citrate buffer pH 6.0**

**Positive Controls:**

WB : Raji cells, HepG2 cells, mouse thymus tissue

IHC : human small intestine tissue,

## Background Information

The human pancreas produces three isoforms of trypsinogen encoded by separate genes, the PRSS1 (protease, serine 1), PRSS2, and PRSS3 genes. PRSS2 is also named as TRY2(trypsin-2), TRYP2. In the ileum, it may be involved in defensin processing, including DEFA5. The preproprotein comprises 247 amino acids, including a 15-amino acid signal peptide and an 8-amino acid activation peptide.

## Notable Publications

Author	Pubmed ID	Journal	Application
Yu Chen	36240716	Tissue Cell	WB,IHC
Tomoyuki Araki	36375250	Biochem Biophys Res Commun	IHC
Timothy L Hostelley	34125181	Biol Open	WB

## Storage

**Storage:**

Store at -20°C. Stable for one year after shipment.

**Storage Buffer:**

PBS with 0.02% sodium azide and 50% glycerol pH 7.3.

Aliquoting is unnecessary for -20°C storage

For technical support and original validation data for this product please contact:

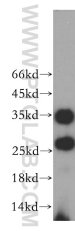
T: 4006900926

E: Proteintech-CN@ptglab.com

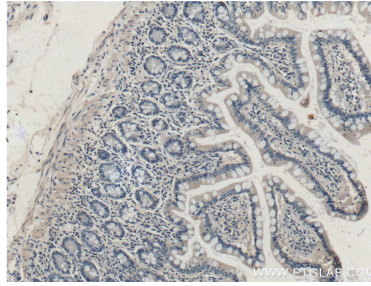
W: ptgcn.com

**This product is exclusively available under Proteintech Group brand and is not available to purchase from any other manufacturer.**

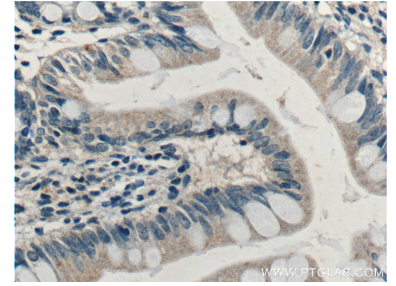
## Selected Validation Data



Raji cells were subjected to SDS PAGE followed by western blot with 15005-1-AP (PRSS2 antibody) at dilution of 1:400 incubated at room temperature for 1.5 hours.



Immunohistochemical analysis of paraffin-embedded human small intestine tissue slide using 15005-1-AP (PRSS2 Antibody) at dilution of 1:400 (under 10x lens).



Immunohistochemical analysis of paraffin-embedded human small intestine tissue slide using 15005-1-AP (PRSS2 Antibody) at dilution of 1:400 (under 40x lens).