

METTL3 Polyclonal antibody

Catalog Number: 15073-1-AP

Featured Product

340 Publications

Basic Information

Catalog Number:

15073-1-AP

Size:

600 µg/ml

Source:

Rabbit

Isotype:

IgG

Immunogen Catalog Number:

AG7110

GenBank Accession Number:

BC001650

GeneID (NCBI):

56339

UNIPROT ID:

Q86U44

Full Name:

methyltransferase like 3

Calculated MW:

64 kDa

Observed MW:

65-70 kDa

Purification Method:

Antigen affinity purification

Recommended Dilutions:

WB 1:500-1:2000

IP 0.5-4.0 µg for 1.0-3.0 mg of total protein lysate

IHC 1:750-1:3000

Applications

Tested Applications:

IHC, IP, WB, ELISA

Cited Applications:

ChIP, CoIP, FC, IF, IHC, IP, RIP, WB

Species Specificity:

Human, Mouse, Monkey, Rat

Cited Species:

human, goat, chicken, rat, mouse, monkey, zebrafish, pig, drosophila

Note-IHC: suggested antigen retrieval with TE buffer pH 9.0; (*) Alternatively, antigen retrieval may be performed with citrate buffer pH 6.0

Positive Controls:

WB : HEK-293 cells, HT-1080 cells, HeLa cells, mouse testis tissue, Jurkat cells, NCCIT cells, Neuro-2a cells, HepG2 cells, COS-7 cells, rat testis tissue, A549 cells

IP : HEK-293 cells,

IHC : human renal cell carcinoma tissue, human lung cancer tissue

Background Information

METTL3 is a key S-adenosyl-L-methionine-binding subunit, which is a component of a complex multicomponent enzyme that catalyzes the methylation of internal adenosine residues in eukaryotic mRNA, forming N6-methyladenosine. It contains 2 putative nuclear localization signals and 2 consensus methylation motifs. The calculated molecular weight of METTL3 is 64 kDa, but modified METTL3 is about 65-70 kDa.

Notable Publications

Author	Pubmed ID	Journal	Application
Zhang Zhang	34594034	Nat Methods	WB
Fanpeng Zhao	34593014	Mol Neurodegener	WB, IHC
Brandon J Gheller	33083017	Cell Death Discov	WB

Storage

Storage:

Store at -20°C. Stable for one year after shipment.

Storage Buffer:

PBS with 0.02% sodium azide and 50% glycerol pH 7.3.

Aliquoting is unnecessary for -20°C storage

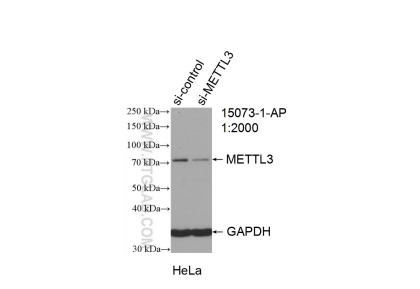
For technical support and original validation data for this product please contact:

T: 4006900926

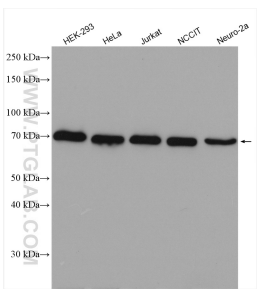
E: Proteintech-CN@ptglab.comW: ptgcn.com

This product is exclusively available under Proteintech Group brand and is not available to purchase from any other manufacturer.

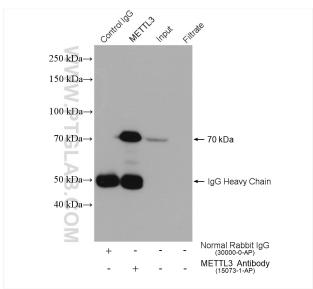
Selected Validation Data



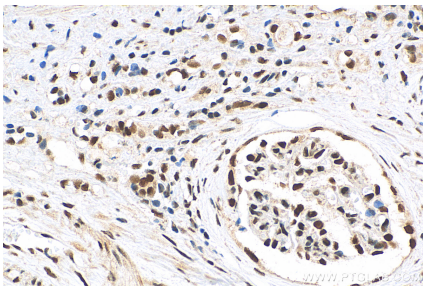
WB result of METTL3 antibody (15073-1-AP; 1:2000; incubated at room temperature for 1.5 hours) with sh-Control and sh-METTL3 transfected HeLa cells.



Various lysates were subjected to SDS PAGE followed by western blot with 15073-1-AP (METTL3 antibody) at dilution of 1:1000 incubated at room temperature for 1.5 hours.



IP result of anti-METTL3 (IP:15073-1-AP, 4ug; Detection:15073-1-AP 1:4000) with HEK-293 cells lysate 1800 ug.



Immunohistochemical analysis of paraffin-embedded human renal cell carcinoma tissue slide using 15073-1-AP (METTL3 antibody) at dilution of 1:1500 (under 40x lens). Heat mediated antigen retrieval with Tris-EDTA buffer (pH 9.0).