

For Research Use Only

# PSMB2 Polyclonal antibody

Catalog Number: 15154-1-AP

Featured Product

8 Publications



## Basic Information

**Catalog Number:**

15154-1-AP

**Size:**

200 ug/ml

**Source:**

Rabbit

**Isotype:**

IgG

**Immunogen Catalog Number:**

AG7198

**GenBank Accession Number:**

BC000268

**GeneID (NCBI):**

5690

**UNIPROT ID:**

P49721

**Full Name:**

proteasome (prosome, macropain)  
subunit, beta type, 2

**Calculated MW:**

23 kDa

**Observed MW:**

23 kDa

**Purification Method:**

Antigen affinity purification

**Recommended Dilutions:**

WB 1:500-1:2000

IF/ICC 1:20-1:200

## Applications

**Tested Applications:**

WB, IF/ICC, ELISA

**Cited Applications:**

WB

**Species Specificity:**

human

**Cited Species:**

human, mouse, rat

**Positive Controls:**

WB : HEK-293T cells, HEK-293 cells, HeLa cells, Jurkat cells

IF/ICC : HepG2 cells,

## Background Information

PSMB2, Proteasome subunit beta type-2, is also known as 20S proteasome subunit beta-4 (PMID: 7918633). The proteasome is responsible for degradation of short lived and misfolded cytosolic and nuclear proteins in the cell and cleaves peptides in an ATP/ubiquitin-dependent process in a non-lysosomal pathway. PSMB2 is up-regulated in ovarian cancer cell lines. The up-regulation of PSMB2 may indicate the activated neuronal defensive mechanism in VAD (vitamin A depletion) brain regions (PMID: 21190828). Knockdown of PSMB2 suppresses hepatocellular carcinoma and gastric cancer cell proliferation and invasion (PMID: 29780166, PMID: 36110152).

## Notable Publications

Author	Pubmed ID	Journal	Application
Sheng Tan	29780166	Oncogene	WB
Chang-Xin Shi	32561655	Mol Cancer Res	WB
Xin Xie	32595507	Front Pharmacol	WB

## Storage

**Storage:**

Store at -20°C. Stable for one year after shipment.

**Storage Buffer:**

PBS with 0.02% sodium azide and 50% glycerol pH 7.3.

Aliquoting is unnecessary for -20°C storage

For technical support and original validation data for this product please contact:

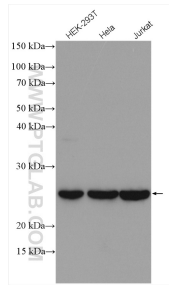
T: 4006900926

E: Proteintech-CN@ptglab.com

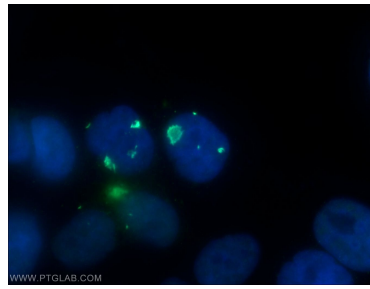
W: ptgcn.com

This product is exclusively available under Proteintech Group brand and is not available to purchase from any other manufacturer.

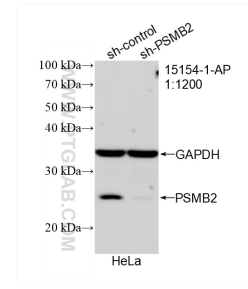
## Selected Validation Data



Various lysates were subjected to SDS PAGE followed by western blot with 15154-1-AP (PSMB2 antibody) at dilution of 1:1000 incubated at room temperature for 1.5 hours.



Immunofluorescent analysis of HepG2 cells using 15154-1-AP (PSMB2 antibody) at dilution of 1:50 and Alexa Fluor 488-conjugated AffiniPure Goat Anti-Rabbit IgG(H+L).



WB result of PSMB2 antibody (15154-1-AP; 1:1200; incubated at room temperature for 1.5 hours) with sh-Control and sh-PSMB2 transfected HeLa cells.