

For Research Use Only

MEN1 Polyclonal antibody

Catalog Number: 15159-1-AP **1 Publications**



Basic Information

Catalog Number: 15159-1-AP	GenBank Accession Number: BC002544	Purification Method: Antigen affinity purification
Size: 400 µg/ml	GeneID (NCBI): 4221	Recommended Dilutions: WB 1:500-1:2000 IP 0.5-4.0 µg for 1.0-3.0 mg of total protein lysate IF/ICC 1:50-1:500
Source: Rabbit	UNIPROT ID: O00255	
Isotype: IgG	Full Name: multiple endocrine neoplasia I	
Immunogen Catalog Number: AG7253	Calculated MW: 68 kDa	
	Observed MW: 63-70 kDa	

Applications

Tested Applications: WB, IF/ICC, IP, ELISA	Positive Controls: WB : HepG2 cells, HeLa cells, Jurkat cells IP : HEK-293 cells, IF/ICC : HeLa cells,
Cited Applications: WB	
Species Specificity: human, mouse, rat	
Cited Species: human	

Background Information

MEN1, also named as Menin or MEAI, is a tumor suppressor protein encoded by the MEN1 gene. Its inactivation has been implicated in tumors of many endocrine tissues. Germline inactivating mutations of MEN1 gene are the main cause of multiple endocrine neoplasia type 1 (MEN1), a syndrome characterized by tumors in the pituitary gland, the parathyroid glands, and the enteropancreatic neuroendocrine tissues. Recent study shows astroglia menin deficiency leads to depressive-like behaviors in mice

Notable Publications

Author	Pubmed ID	Journal	Application
Fenfei Liang	38905100	Cell Rep	WB

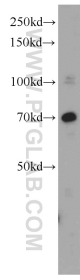
Storage

Storage:
Store at -20°C. Stable for one year after shipment.
Storage Buffer:
PBS with 0.02% sodium azide and 50% glycerol pH 7.3.
Aliquoting is unnecessary for -20°C storage

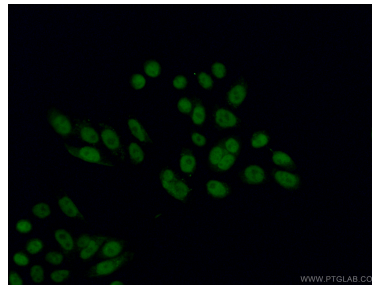
For technical support and original validation data for this product please contact:
T: 4006900926 E: Proteintech-CN@ptglab.com W: ptgcn.com

This product is exclusively available under Proteintech Group brand and is not available to purchase from any other manufacturer.

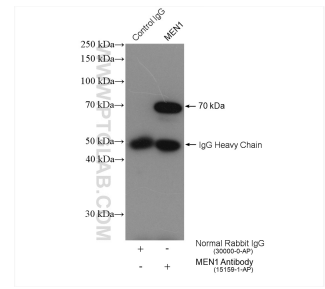
Selected Validation Data



HepG2 cells were subjected to SDS PAGE followed by western blot with 15159-1-AP (MEN1 antibody) at dilution of 1:500 incubated at room temperature for 1.5 hours.



Immunofluorescent analysis of (4% PFA) fixed HeLa cells using 15159-1-AP (MEN1 antibody) at dilution of 1:50 and CoraLite488-Conjugated AffiniPure Goat Anti-Rabbit IgG(H+L).



IP result of anti-MEN1 (IP:15159-1-AP, 4ug; Detection:15159-1-AP 1:500) with HEK-293 cells lysate 1320 ug.