

For Research Use Only

# RPB5 Polyclonal antibody

Catalog Number: 15217-1-AP **5 Publications**



## Basic Information

**Catalog Number:**

15217-1-AP

**Size:**

600 µg/ml

**Source:**

Rabbit

**Isotype:**

IgG

**Immunogen Catalog Number:**

AG7386

**GenBank Accession Number:**

BC004441

**GeneID (NCBI):**

5434

**UNIPROT ID:**

P19388

**Full Name:**

polymerase (RNA) II (DNA directed)  
polypeptide E, 25kDa

**Calculated MW:**

25 kDa

**Observed MW:**

23-25 kDa

**Purification Method:**

Antigen affinity purification

**Recommended Dilutions:**

WB 1:1000-1:6000

IP 0.5-4.0 µg for 1.0-3.0 mg of total  
protein lysate

IHC 1:50-1:500

## Applications

**Tested Applications:**

IHC, IP, WB, ELISA

**Cited Applications:**

WB

**Species Specificity:**

human, mouse, rat

**Cited Species:**

human, mouse

**Note-IHC: suggested antigen retrieval with  
TE buffer pH 9.0; (\*) Alternatively, antigen  
retrieval may be performed with citrate  
buffer pH 6.0**

**Positive Controls:**

**WB:** A549 cells, HeLa cells, MCF-7 cells, HepG2 cells,  
rat liver tissue, rat spleen tissue, mouse spleen tissue,  
mouse liver tissue, Jurkat cells

**IP:** HeLa cells,

**IHC:** human breast cancer tissue,

## Background Information

DNA-dependent RNA polymerase catalyzes the transcription of DNA into RNA using the four ribonucleoside triphosphates as substrates. Common component of RNA polymerases I, II and III which synthesize ribosomal RNA precursors, mRNA precursors and many functional non-coding RNAs, and small RNAs, such as 5S rRNA and tRNAs, respectively. polymerase (RNA) II is the central component of the basal RNA polymerase II transcription machinery. Pols are composed of mobile elements that move relative to each other. In Pol II, POLR2E (Polymerase (RNA) II (DNA directed) polypeptide E) /RPB5 is part of the lower jaw surrounding the central large cleft and thought to grab the incoming DNA template. Seems to be the major component in this process. The observed molecular weight of POLR2E is about 25 kDa.

## Notable Publications

Author	Pubmed ID	Journal	Application
Yuanjun Li	36113479	Mol Cell	WB
Yongpeng Jiang	36443871	Genome Biol	
Yuki Aoi	34480849	Mol Cell	WB

## Storage

**Storage:**

Store at -20°C. Stable for one year after shipment.

**Storage Buffer:**

PBS with 0.02% sodium azide and 50% glycerol pH 7.3.

Aliquoting is unnecessary for -20°C storage

For technical support and original validation data for this product please contact:

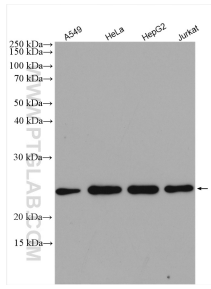
T: 4006900926

E: [Proteintech-CN@ptglab.com](mailto:Proteintech-CN@ptglab.com)

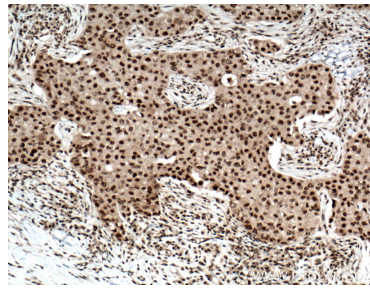
W: [ptgcn.com](http://ptgcn.com)

**This product is exclusively available under Proteintech Group brand and is not available to purchase from any other manufacturer.**

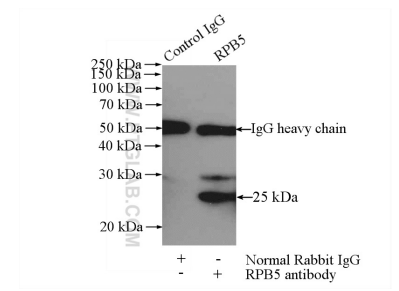
## Selected Validation Data



Various lysates were subjected to SDS PAGE followed by western blot with 15217-1-AP (RPB5 antibody) at dilution of 1:3000 incubated at room temperature for 1.5 hours.



Immunohistochemical analysis of paraffin-embedded human breast cancer tissue slide using 15217-1-AP (RPB5 antibody) at dilution of 1:200 (under 10x lens. Heat mediated antigen retrieval with Tris-EDTA buffer (pH 9.0).



IP result of anti-RPB5 (IP:15217-1-AP, 4ug; Detection:15217-1-AP 1:500) with HeLa cells lysate 880ug.