

For Research Use Only

RPL21 Polyclonal antibody, PBS Only

Catalog Number:15226-1-PBS



Basic Information

Catalog Number:

15226-1-PBS

Size:

1 mg/ml

Source:

Rabbit

Isotype:

IgG

Immunogen Catalog Number:

AG7444

GenBank Accession Number:

BC001603

GeneID (NCBI):

6144

UNIPROT ID:

P46778

Full Name:

ribosomal protein L21

Calculated MW:

19 kDa

Observed MW:

20-25 kDa

Purification Method:

Antigen affinity purification

Applications

Tested Applications:

WB, IHC, IF/ICC, Indirect ELISA

Species Specificity:

human, mouse, rat

Background Information

Storage

Storage:

Store at -80°C.

The product is shipped with ice packs. Upon receipt, store it immediately at -80°C

Storage Buffer:

PBS Only

For technical support and original validation data for this product please contact:

T: 4006900926

E: Proteintech-CN@ptglab.com

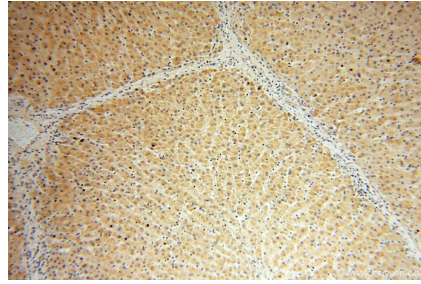
W: ptgcn.com

This product is exclusively available under Proteintech Group brand and is not available to purchase from any other manufacturer.

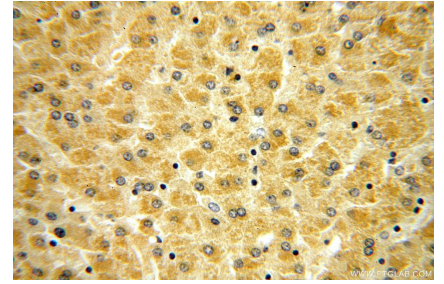
Selected Validation Data



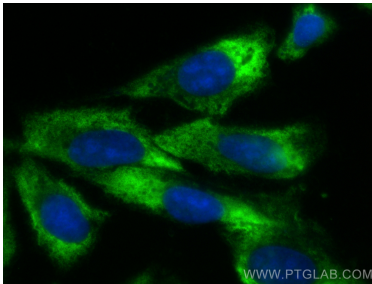
HepG2 cells were subjected to SDS PAGE followed by western blot with 15226-1-AP (RPL21 antibody) at dilution of 1:300 incubated at room temperature for 1.5 hours. This data was developed using the same antibody clone with 15226-1-PBS in a different storage buffer formulation.



Immunohistochemical analysis of paraffin-embedded human liver using 15226-1-AP (RPL21 antibody) at dilution of 1:100 (under 10x lens). This data was developed using the same antibody clone with 15226-1-PBS in a different storage buffer formulation.



Immunohistochemical analysis of paraffin-embedded human liver using 15226-1-AP (RPL21 antibody) at dilution of 1:100 (under 40x lens). This data was developed using the same antibody clone with 15226-1-PBS in a different storage buffer formulation.



Immunofluorescent analysis of (-20°C Ethanol) fixed U2OS cells using RPL21 antibody (15226-1-AP) at dilution of 1:400 and CoraLite®488-Conjugated Goat Anti-Rabbit IgG(H+L) (SA00013-2). This data was developed using the same antibody clone with 15226-1-PBS in a different storage buffer formulation.