

For Research Use Only

PSMD13 Polyclonal antibody

Catalog Number: 15261-1-AP

Featured Product

5 Publications



Basic Information

Catalog Number:

15261-1-AP

Size:

260 ug/ml

Source:

Rabbit

Isotype:

IgG

Immunogen Catalog Number:

AG7257

GenBank Accession Number:

BC001100

GeneID (NCBI):

5719

UNIPROT ID:

Q9UNM6

Full Name:

proteasome (prosome, macropain)
26S subunit, non-ATPase, 13

Calculated MW:

43 kDa

Observed MW:

43 kDa

Purification Method:

Antigen affinity purification

Recommended Dilutions:

WB 1:500-1:2000

IP 0.5-4.0 ug for 1.0-3.0 mg of total protein lysate

IHC 1:50-1:500

IF/ICC 1:10-1:100

Applications

Tested Applications:

WB, IHC, IF/ICC, IP, ELISA

Cited Applications:

WB, IHC

Species Specificity:

human

Cited Species:

mouse

Note-IHC: suggested antigen retrieval with TE buffer pH 9.0; (*) Alternatively, antigen retrieval may be performed with citrate buffer pH 6.0

Positive Controls:

WB : HEK-293 cells, HepG2 cells, HeLa cells, Jurkat cells, Y79 cells

IP : HEK-293T cells,

IHC : human kidney tissue, human colon cancer tissue

IF/ICC : HeLa cells,

Background Information

Notable Publications

Author	Pubmed ID	Journal	Application
Songhua Li	27225770	J Neurosci	WB
Songhua Li	24849605	J Biol Chem	WB,IHC
Jennifer E Gilda	38767572	J Cell Biol	WB

Storage

Storage:

Store at -20°C. Stable for one year after shipment.

Storage Buffer:

PBS with 0.02% sodium azide and 50% glycerol pH 7.3.

Aliquoting is unnecessary for -20°C storage

For technical support and original validation data for this product please contact:

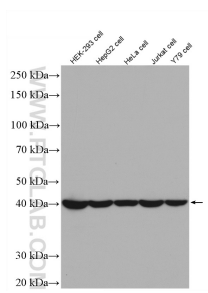
T: 4006900926

E: Proteintech-CN@ptglab.com

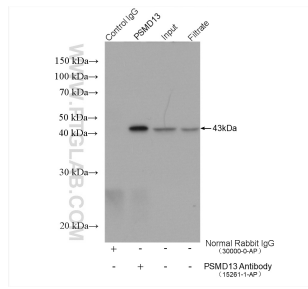
W: ptgcn.com

This product is exclusively available under Proteintech Group brand and is not available to purchase from any other manufacturer.

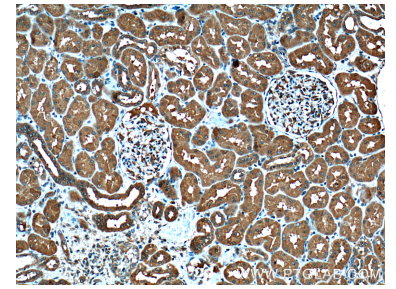
Selected Validation Data



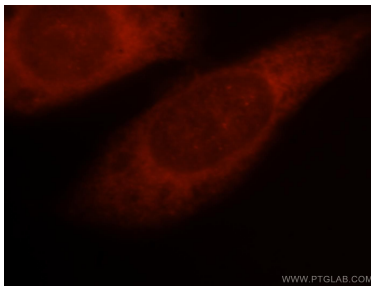
Various lysates were subjected to SDS PAGE followed by western blot with 15261-1-AP (PSMD13 antibody) at dilution of 1:1000 incubated at room temperature for 1.5 hours.



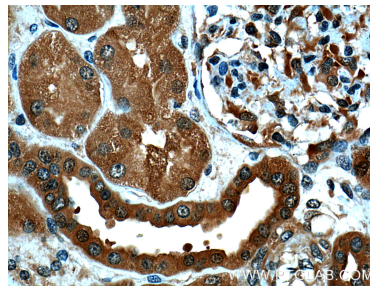
IP result of anti-PSMD13 (IP:15261-1-AP, 4 μ g; Detection:15261-1-AP 1:1000) with HEK-293T cells lysate 1200 μ g.



Immunohistochemical analysis of paraffin-embedded human kidney tissue slide using 15261-1-AP (PSMD13 Antibody) at dilution of 1:200 (under 10x lens).



Immunofluorescent analysis of HeLa cells, using PSMD13 antibody 15261-1-AP at 1:25 dilution and Rhodamine-labeled goat anti-rabbit IgG (red).



Immunohistochemical analysis of paraffin-embedded human kidney tissue slide using 15261-1-AP (PSMD13 Antibody) at dilution of 1:200 (under 40x lens).