

For Research Use Only

ATP6AP1 Polyclonal antibody

Catalog Number: 15305-1-AP **4 Publications**



Basic Information

Catalog Number:

15305-1-AP

Size:

240 µg/ml

Source:

Rabbit

Isotype:

IgG

Immunogen Catalog Number:

AG7859

GenBank Accession Number:

BC000724

GeneID (NCBI):

537

UNIPROT ID:

Q15904

Full Name:

ATPase, H⁺ transporting, lysosomal accessory protein 1

Calculated MW:

52 kDa

Observed MW:

46-52 kDa, 61-64 kDa

Purification Method:

Antigen affinity purification

Recommended Dilutions:

WB 1:500-1:2000

IHC 1:20-1:200

Applications

Tested Applications:

WB, IHC, ELISA

Cited Applications:

WB, IHC, IF

Species Specificity:

human, mouse, rat

Cited Species:

human

Note-IHC: suggested antigen retrieval with TE buffer pH 9.0; (*) Alternatively, antigen retrieval may be performed with citrate buffer pH 6.0

Positive Controls:

WB : mouse kidney tissue, HeLa cells, HepG2 cells

IHC : human kidney tissue,

Background Information

Notable Publications

Author	Pubmed ID	Journal	Application
Ang Luo	35893764	Proteomes	WB
Enrica Balza	28700346	Oncotarget	IF
Yinjiao Fei	39627767	Cancer Cell Int	IHC

Storage

Storage:

Store at -20°C. Stable for one year after shipment.

Storage Buffer:

PBS with 0.02% sodium azide and 50% glycerol pH 7.3.

Aliquoting is unnecessary for -20°C storage

For technical support and original validation data for this product please contact:

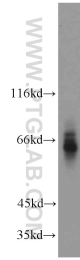
T: 4006900926

E: Proteintech-CN@ptglab.com

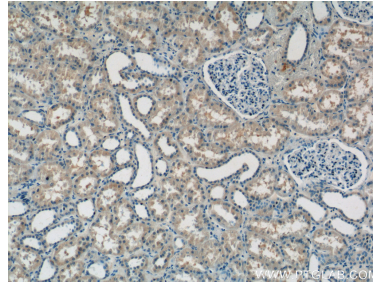
W: ptgcn.com

This product is exclusively available under Proteintech Group brand and is not available to purchase from any other manufacturer.

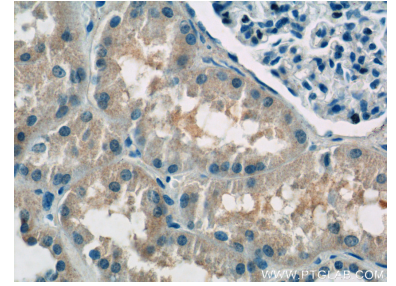
Selected Validation Data



mouse kidney tissue were subjected to SDS PAGE followed by western blot with 15305-1-AP (ATP6AP1 antibody) at dilution of 1:300 incubated at room temperature for 1.5 hours.



Immunohistochemical analysis of paraffin-embedded human kidney tissue slide using 15305-1-AP (ATP6AP1 Antibody) at dilution of 1:50 (under 10x lens).



Immunohistochemical analysis of paraffin-embedded human kidney tissue slide using 15305-1-AP (ATP6AP1 Antibody) at dilution of 1:50 (under 40x lens).