

For Research Use Only

SLC25A15 Polyclonal antibody

Catalog Number: 15317-1-AP



Basic Information

Catalog Number:

15317-1-AP

Size:

450 µg/ml

Source:

Rabbit

Isotype:

IgG

Immunogen Catalog Number:

AG7563

GenBank Accession Number:

BC002702

GeneID (NCBI):

10166

UNIPROT ID:

Q9Y619

Full Name:

solute carrier family 25
(mitochondrial carrier; ornithine
transporter) member 15

Calculated MW:

33 kDa

Observed MW:

30-33 kDa

Purification Method:

Antigen affinity purification

Recommended Dilutions:

WB 1:500-1:1000

IHC 1:50-1:500

IF/ICC 1:200-1:800

Applications

Tested Applications:

WB, IHC, IF/ICC, ELISA

Species Specificity:

human, mouse, rat

**Note-IHC: suggested antigen retrieval with
TE buffer pH 9.0; (*) Alternatively, antigen
retrieval may be performed with citrate
buffer pH 6.0**

Positive Controls:

WB: HeLa cells, mouse liver tissue, mouse stomach
tissue

IHC: human liver cancer tissue, human skin tissue,
human brain tissue, human lung tissue, human ovary
tissue

IF/ICC: MCF-7 cells,

Background Information

SLC25A15 gene encodes a 301-amino-acid-long mitochondrial carrier protein termed ORC1, which catalyzes the transport of cytosolic ornithine into mitochondria in exchange for citrulline (PMID: 19242930). Some mutations in the SLC25A15 gene have been reported to break the ornithine cycle and be related with human hyperornithinemia, hyperammonemia, and homocitrullinuria syndrome (PMID: 19242930, 24721342). This antibody detected SLC25A15 at an apparent molecular mass about 33 kDa.

Storage

Storage:

Store at -20°C. Stable for one year after shipment.

Storage Buffer:

PBS with 0.02% sodium azide and 50% glycerol pH 7.3.

Aliquoting is unnecessary for -20°C storage

For technical support and original validation data for this product please contact:

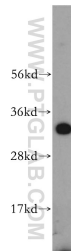
T: 4006900926

E: Proteintech-CN@ptglab.com

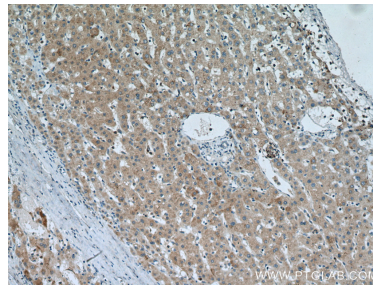
W: ptgcn.com

This product is exclusively available under Proteintech Group brand and is not available to purchase from any other manufacturer.

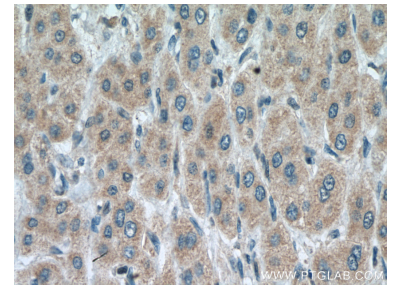
Selected Validation Data



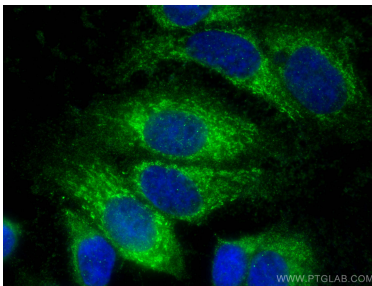
HeLa cells were subjected to SDS PAGE followed by western blot with 15317-1-AP (SLC25A15 antibody) at dilution of 1:500 incubated at room temperature for 1.5 hours.



Immunohistochemical analysis of paraffin-embedded human liver cancer tissue slide using 15317-1-AP (SLC25A15 antibody) at dilution of 1:200 (under 10x lens. Heat mediated antigen retrieval with Tris-EDTA buffer (pH 9.0).



Immunohistochemical analysis of paraffin-embedded human liver cancer tissue slide using 15317-1-AP (SLC25A15 antibody) at dilution of 1:200 (under 40x lens. Heat mediated antigen retrieval with Tris-EDTA buffer (pH 9.0).



Immunofluorescent analysis of (-20°C Methanol) fixed MCF-7 cells using SLC25A15 antibody (15317-1-AP) at dilution of 1:400 and CoraLite®488-Conjugated AffiniPure Goat Anti-Rabbit IgG(H+L).