

For Research Use Only

# PAF1 Polyclonal antibody

Catalog Number: 15441-1-AP

Featured Product

7 Publications



## Basic Information

**Catalog Number:**

15441-1-AP

**Size:**

600 µg/ml

**Source:**

Rabbit

**Isotype:**

IgG

**Immunogen Catalog Number:**

AG7212

**GenBank Accession Number:**

BC000017

**GeneID (NCBI):**

54623

**UNIPROT ID:**

Q8N7H5

**Full Name:**

Paf1, RNA polymerase II associated factor, homolog (*S. cerevisiae*)

**Calculated MW:**

60 kDa

**Observed MW:**

80 kDa

**Purification Method:**

Antigen affinity purification

**Recommended Dilutions:**

WB 1:500-1:2000

IP 0.5-4.0 µg for 1.0-3.0 mg of total protein lysate

IHC 1:50-1:500

## Applications

**Tested Applications:**

IHC, IP, WB, ELISA

**Cited Applications:**

WB

**Species Specificity:**

human

**Cited Species:**

human

**Positive Controls:**

WB: HepG2 cells, HeLa cells

IP: HeLa cells,

IHC: human ovary tumor tissue, human liver cancer tissue

**Note-IHC: suggested antigen retrieval with TE buffer pH 9.0; (\*) Alternatively, antigen retrieval may be performed with citrate buffer pH 6.0**

## Background Information

PAF1, also known as hPAF1 or PD2, is a PAF (RNA Polymerase II Associated Factor) complex subunit. Paf1 functions primarily to modulate transcript elongation. PAF1 occupies transcriptional enhancers and restrains hyperactivation of a subset of these enhancers (PMID: 28860207). The PAF complex also has a role in histone monoubiquitination. Paf1 is overexpressed in pancreatic cancer cells and has demonstrated potential oncogenic property. The MW of this protein is 80 kDa, and this antibody specially recognises the 80 kDa protein.

## Notable Publications

Author	Pubmed ID	Journal	Application
Liangde Zheng	31525119	Autophagy	WB
Chen Chen	34499080	J Cell Biol	WB
Jing-Jie Zheng	32471508	Radiat Oncol	WB

## Storage

**Storage:**

Store at -20°C. Stable for one year after shipment.

**Storage Buffer:**

PBS with 0.02% sodium azide and 50% glycerol pH 7.3.

Aliquoting is unnecessary for -20°C storage

For technical support and original validation data for this product please contact:

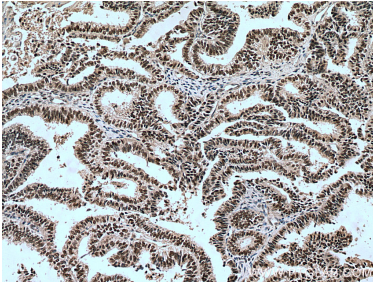
T: 4006900926

E: Proteintech-CN@ptglab.com

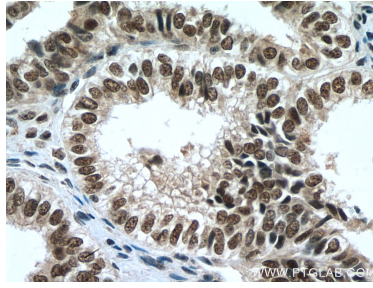
W: ptgcn.com

**This product is exclusively available under Proteintech Group brand and is not available to purchase from any other manufacturer.**

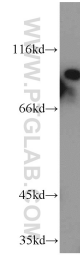
## Selected Validation Data



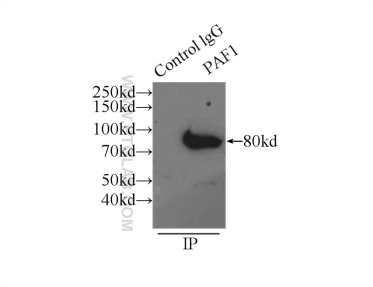
Immunohistochemical analysis of paraffin-embedded human ovary tumor tissue slide using 15441-1-AP (PAF1 antibody) at dilution of 1:200 (under 10x lens). Heat mediated antigen retrieval with Tris-EDTA buffer (pH 9.0).



Immunohistochemical analysis of paraffin-embedded human ovary tumor tissue slide using 15441-1-AP (PAF1 antibody) at dilution of 1:200 (under 40x lens). Heat mediated antigen retrieval with Tris-EDTA buffer (pH 9.0).



HepG2 cells were subjected to SDS PAGE followed by western blot with 15441-1-AP (PAF1 antibody) at dilution of 1:1000 incubated at room temperature for 1.5 hours.



IP result of anti-PAF1 (IP:15441-1-AP, 3ug; Detection:15441-1-AP 1:1000) with HeLa cells lysate 3000ug.