

For Research Use Only

S100A2 Polyclonal antibody

Catalog Number:15454-1-AP



Basic Information

| | | |
|--------------------------------------------|------------------------------------------------------------------|------------------------------------------------------------------------------------------|
| Catalog Number: 15454-1-AP | GenBank Accession Number: BC002829 | Purification Method: Antigen affinity purification |
| Size: 500 ug/ml | GeneID (NCBI): 6273 | Recommended Dilutions: WB 1:500-1:1000 IHC 1:50-1:500 IF/ICC 1:200-1:800 |
| Source: Rabbit | UNIPROT ID: P29034 | |
| Isotype: IgG | Full Name: S100 calcium binding protein A2 | |
| Immunogen Catalog Number: AG7719 | Calculated MW: 11 kDa Observed MW: 10 kDa | |

Applications

Tested Applications:
WB, IHC, IF/ICC, ELISA

Species Specificity:
human

Note-IHC: suggested antigen retrieval with TE buffer pH 9.0; (*) Alternatively, antigen retrieval may be performed with citrate buffer pH 6.0

Positive Controls:

WB: HaCaT cells, HeLa cells

IHC: human bowen disease,

IF/ICC: A431 cells,

Background Information

S100A2 (S100 calcium-binding protein A2) is also named as S100L and CAN19. S100A2, a member of the S100 protein family, is more highly expressed in endometrial carcinoma tissues than in normal tissues and was correlated with worse survival (PMID: 35042454). S100A2 has a tumor suppressor function. S100A2 is highly upregulated in the epidermis under inflammatory conditions and in drug eruptions, in addition to inflammatory skin diseases such as atopic dermatitis and psoriasis (PMID: 35885660).

Storage

Storage:

Store at -20°C. Stable for one year after shipment.

Storage Buffer:

PBS with 0.02% sodium azide and 50% glycerol pH 7.3.

Aliquoting is unnecessary for -20°C storage

For technical support and original validation data for this product please contact:

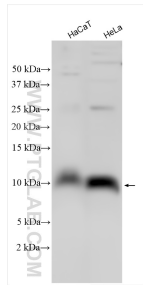
T: 4006900926

E: Proteintech-CN@ptglab.com

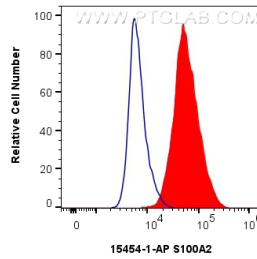
W: ptgcn.com

This product is exclusively available under Proteintech Group brand and is not available to purchase from any other manufacturer.

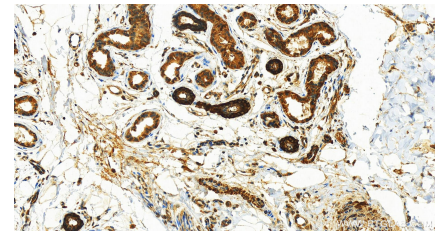
Selected Validation Data



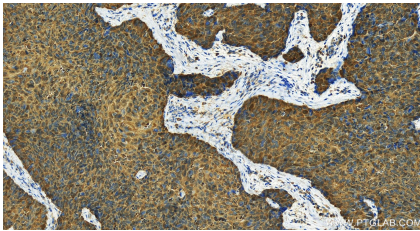
Various lysates were subjected to SDS PAGE followed by western blot with 15454-1-AP (S100A2 antibody) at dilution of 1:600 incubated at room temperature for 1.5 hours.



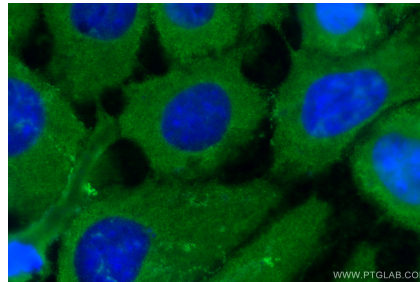
1×10^6 A431 cells were intracellularly stained with 0.4 μ g S100A2 Polyclonal antibody (15454-1-AP) and CoraLite[®] 488-Conjugated AffiniPure Goat Anti-Rabbit IgG(H+L) (SA00013-2)(red), or 0.4 μ g Rabbit IgG control Rabbit PolyAb (30000-O-AP) (blue). Cells were fixed with 4% PFA and permeabilized with Flow Cytometry Perm Buffer (PF00011-C).



Immunohistochemical analysis of paraffin-embedded human Bowen disease slide using 15454-1-AP (S100A2 antibody) at dilution of 1:200 (under 20x lens). Heat mediated antigen retrieval with Tris-EDTA buffer (pH 9.0).



Immunohistochemical analysis of paraffin-embedded human Bowen disease slide using 15454-1-AP (S100A2 antibody) at dilution of 1:200 (under 20x lens). Heat mediated antigen retrieval with Tris-EDTA buffer (pH 9.0).



Immunofluorescent analysis of (-20°C Methanol) fixed A431 cells using S100A2 antibody (15454-1-AP) at dilution of 1:400 and CoraLite[®] 488-Conjugated AffiniPure Goat Anti-Rabbit IgG(H+L) (SA00013-2).