

For Research Use Only

# WIT1 Polyclonal antibody

Catalog Number: 15458-1-AP



## Basic Information

Catalog Number: 15458-1-AP	GenBank Accession Number: BC002734	Purification Method: Antigen affinity purification
Size: 373 µg/ml	GeneID (NCBI): 51352	Recommended Dilutions: IHC 1:50-1:200
Source: Rabbit	Full Name: Wilms tumor upstream neighbor 1	
Isotype: IgG	Calculated MW: 10 kDa	
Immunogen Catalog Number: AG7728		

## Applications

Tested Applications: IHC, ELISA	Positive Controls: IHC : human ovary tumor tissue, human nephroblastoma tissue
Species Specificity: human	

**Note-IHC: suggested antigen retrieval with TE buffer pH 9.0; (\*) Alternatively, antigen retrieval may be performed with citrate buffer pH 6.0**

## Background Information

### Storage

Storage:  
Store at -20°C. Stable for one year after shipment.  
Storage Buffer:  
PBS with 0.02% sodium azide and 50% glycerol pH 7.3.  
Aliquoting is unnecessary for -20°C storage

For technical support and original validation data for this product please contact:

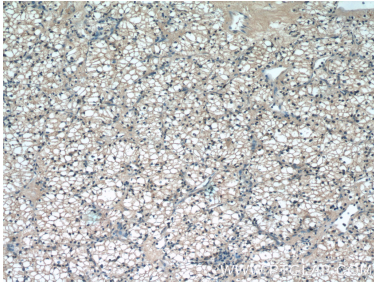
T: 4006900926

E: Proteintech-CN@ptglab.com

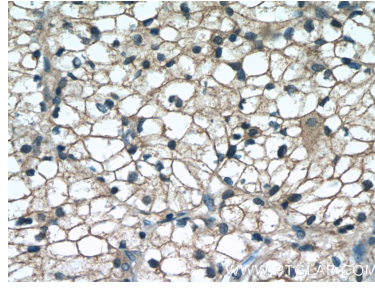
W: ptgcn.com

This product is exclusively available under Proteintech Group brand and is not available to purchase from any other manufacturer.

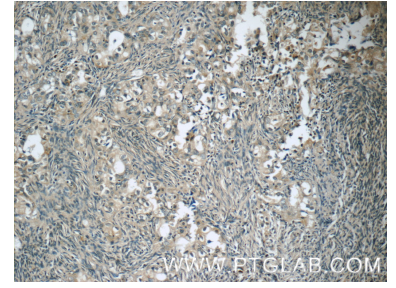
## Selected Validation Data



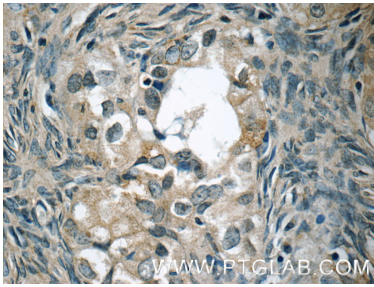
Immunohistochemical analysis of paraffin-embedded human nephroblastoma tissue slide using 15458-1-AP (WIT1 Antibody) at dilution of 1:50 (under 10x lens).



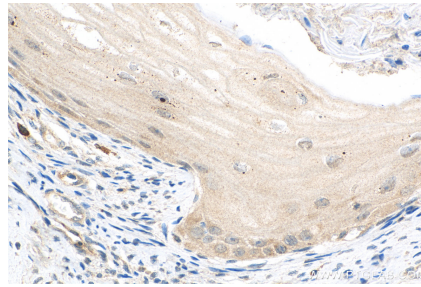
Immunohistochemical analysis of paraffin-embedded human nephroblastoma tissue slide using 15458-1-AP (WIT1 Antibody) at dilution of 1:50 (under 40x lens).



Immunohistochemical analysis of paraffin-embedded human ovary tumor tissue slide using 15458-1-AP (WIT1 Antibody) at dilution of 1:50 (under 10x lens).



Immunohistochemical analysis of paraffin-embedded human ovary tumor tissue slide using 15458-1-AP (WIT1 Antibody) at dilution of 1:50 (under 40x lens).



Immunohistochemical analysis of paraffin-embedded human ovary tumor tissue slide using 15458-1-AP (WIT1 antibody) at dilution of 1:200 (under 40x lens). Heat mediated antigen retrieval with Tris-EDTA buffer (pH 9.0).