

## KISS1R-Specific Polyclonal antibody

Catalog Number: 15505-1-AP

4 Publications

## Basic Information

<b>Catalog Number:</b> 15505-1-AP	<b>GenBank Accession Number:</b> NM_032551	<b>Purification Method:</b> Antigen affinity purification
<b>Size:</b> 500 µg/ml	<b>GeneID (NCBI):</b> 84634	<b>Recommended Dilutions:</b> WB 1:500-1:3000 IHC 1:50-1:500 IF/ICC 1:10-1:100
<b>Source:</b> Rabbit	<b>UNIPROT ID:</b> Q969F8	
<b>Isotype:</b> IgG	<b>Full Name:</b> KISS1 receptor	
	<b>Calculated MW:</b> 43 kDa	
	<b>Observed MW:</b> 75 kDa, 43-45 kDa	

## Applications

**Tested Applications:**  
WB, IHC, IF/ICC, ELISA

**Cited Applications:**  
WB, IF

**Species Specificity:**  
human, mouse

**Cited Species:**  
human, bovine

**Note-IHC: suggested antigen retrieval with TE buffer pH 9.0; (\*) Alternatively, antigen retrieval may be performed with citrate buffer pH 6.0**

**Positive Controls:**

**WB :** mouse cerebellum tissue, MCF-7 cells, SH-SY5Y cells

**IHC :** mouse cerebellum tissue,

**IF/ICC :** MCF-7 cells, Hela cells, HepG2 cells

## Background Information

KISS1R is the receptor for metastin (kisspeptin-54, 13, 14, 10), C-terminally amidated peptides of KISS-1. KISS-1 is a metastasis suppressor protein that suppresses metastases in malignant melanomas and in some other carcinomas without affecting tumorigenicity. The metastasis suppressor properties may be mediated in part by cell cycle arrest and induction of apoptosis in malignant cells. The receptor is also probably involved in the regulation and fine-tuning of trophoblast invasion generated by the trophoblast itself. Analysis of the transduction pathways activated by the receptor identifies coupling to phospholipase C and intracellular calcium release through pertussis toxin-insensitive G(q) proteins.

## Notable Publications

Author	Pubmed ID	Journal	Application
Yanwei Li	31621904	J Cell Physiol	
Tianwei Chen	36453019	Mol Oncol	WB
Jianhua Sun	29206176	Int J Mol Sci	WB

## Storage

**Storage:**

Store at -20°C. Stable for one year after shipment.

**Storage Buffer:**

PBS with 0.02% sodium azide and 50% glycerol pH 7.3.

Aliquoting is unnecessary for -20°C storage

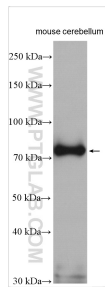
For technical support and original validation data for this product please contact:

T: 4006900926

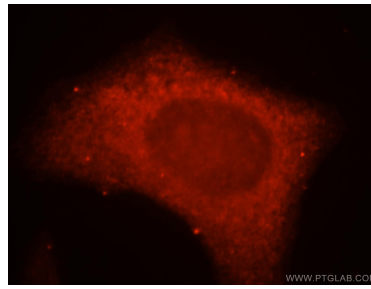
E: [Proteintech-CN@ptglab.com](mailto:Proteintech-CN@ptglab.com)W: [ptgcn.com](http://ptgcn.com)

**This product is exclusively available under Proteintech Group brand and is not available to purchase from any other manufacturer.**

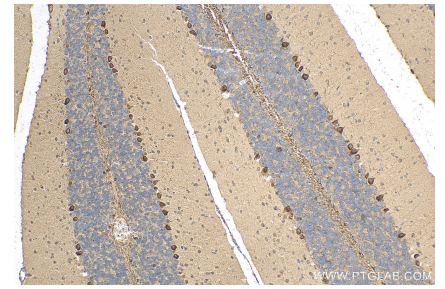
## Selected Validation Data



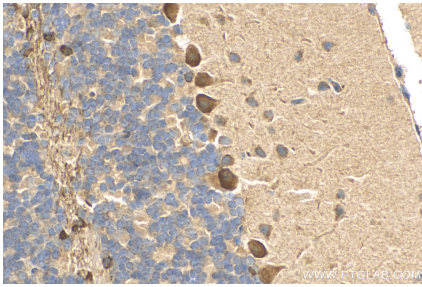
mouse cerebellum tissue were subjected to SDS PAGE followed by western blot with 15505-1-AP (KISS1R-Specific antibody) at dilution of 1:1500 incubated at room temperature for 1.5 hours.



Immunofluorescent analysis of MCF-7 cells, using KISS1R antibody 15505-1-AP at 1:25 dilution and Rhodamine-labeled goat anti-rabbit IgG (red).



Immunohistochemical analysis of paraffin-embedded mouse cerebellum tissue slide using 15505-1-AP (KISS1R-Specific antibody) at dilution of 1:200 (under 10x lens). Heat mediated antigen retrieval with Tris-EDTA buffer (pH 9.0).



Immunohistochemical analysis of paraffin-embedded mouse cerebellum tissue slide using 15505-1-AP (KISS1R-Specific antibody) at dilution of 1:200 (under 40x lens). Heat mediated antigen retrieval with Tris-EDTA buffer (pH 9.0).