

For Research Use Only

PPM1G Polyclonal antibody

Catalog Number: 15532-1-AP

Featured Product

3 Publications



Basic Information

Catalog Number:

15532-1-AP

Size:

900 µg/ml

Source:

Rabbit

Isotype:

IgG

Immunogen Catalog Number:

AG7751

GenBank Accession Number:

BC000057

GeneID (NCBI):

5496

UNIPROT ID:

O15355

Full Name:

protein phosphatase 1G (formerly 2C), magnesium-dependent, gamma isoform

Calculated MW:

59 kDa

Observed MW:

70 kDa

Purification Method:

Antigen affinity purification

Recommended Dilutions:

WB 1:500-1:3000

IHC 1:50-1:500

IF/ICC 1:200-1:800

Applications

Tested Applications:

WB, IHC, IF/ICC, ELISA

Cited Applications:

WB, IHC

Species Specificity:

human, mouse, rat

Cited Species:

human

Note-IHC: suggested antigen retrieval with TE buffer pH 9.0; (*) Alternatively, antigen retrieval may be performed with citrate buffer pH 6.0

Positive Controls:

WB: HEK-293T cells, mouse lung tissue, Jurkat cells, MCF-7 cells

IHC: mouse kidney tissue, mouse testis tissue, human heart tissue, human kidney tissue, human skin tissue, human placenta tissue, human brain tissue, mouse spleen tissue, human liver tissue

IF/ICC: MCF-7 cells,

Background Information

PPM1G, also known as PP2C γ and PP2CG, is an important member of the PP2C family of serine/threonine protein phosphatases and has an important role in controlling cell cycle progression. PPM1G restricts innate immune signaling mediated by STING and MAVS and is hijacked by KSHV for immune evasion (PMID: 33219031). In addition, PPM1G promotes the progression of hepatocellular carcinoma via phosphorylation regulation of alternative splicing protein SRSF3 (PMID: 34290239).

Notable Publications

Author	Pubmed ID	Journal	Application
Mao-Xu Ge	31621893	Br J Pharmacol	WB
Dawei Chen	34290239	Cell Death Dis	WB, IHC
Weiran Liao	36072981	J Oncol	WB

Storage

Storage:

Store at -20°C. Stable for one year after shipment.

Storage Buffer:

PBS with 0.02% sodium azide and 50% glycerol pH 7.3.

Aliquoting is unnecessary for -20°C storage

For technical support and original validation data for this product please contact:

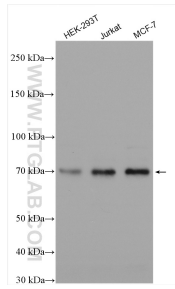
T: 4006900926

E: Proteintech-CN@ptglab.com

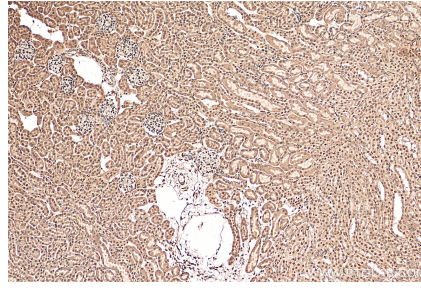
W: ptgcn.com

This product is exclusively available under Proteintech Group brand and is not available to purchase from any other manufacturer.

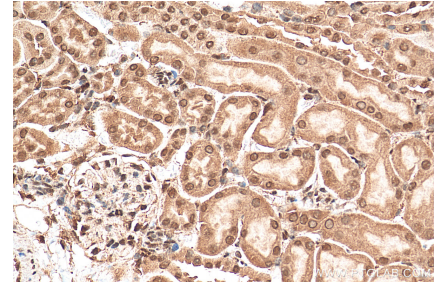
Selected Validation Data



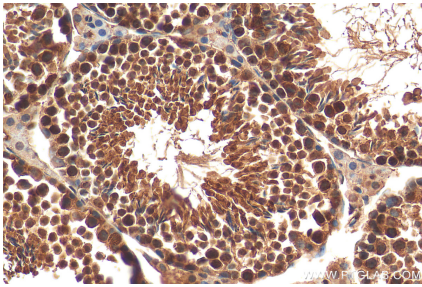
Various lysates were subjected to SDS PAGE followed by western blot with 15532-1-AP (PPM1G antibody) at dilution of 1:1500 incubated at room temperature for 1.5 hours.



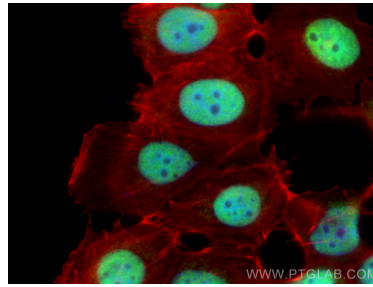
Immunohistochemical analysis of paraffin-embedded mouse kidney tissue slide using 15532-1-AP (PPM1G antibody) at dilution of 1:200 (under 10x lens). Heat mediated antigen retrieval with Tris-EDTA buffer (pH 9.0).



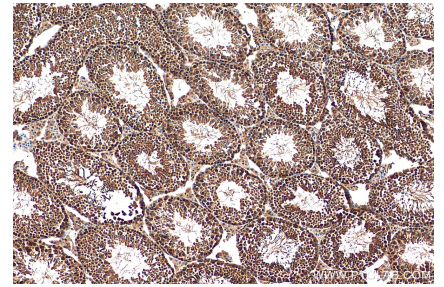
Immunohistochemical analysis of paraffin-embedded mouse kidney tissue slide using 15532-1-AP (PPM1G antibody) at dilution of 1:200 (under 40x lens). Heat mediated antigen retrieval with Tris-EDTA buffer (pH 9.0).



Immunohistochemical analysis of paraffin-embedded mouse testis tissue slide using 15532-1-AP (PPM1G antibody) at dilution of 1:200 (under 40x lens). Heat mediated antigen retrieval with Tris-EDTA buffer (pH 9.0).



Immunofluorescent analysis of (4% PFA) fixed MCF-7 cells using PPM1G antibody (15532-1-AP) at dilution of 1:400 and CoraLite@488-Conjugated AffiniPure Goat Anti-Rabbit IgG(H+L), CL594-Phalloidin (red).



Immunohistochemical analysis of paraffin-embedded mouse testis tissue slide using 15532-1-AP (PPM1G antibody) at dilution of 1:200 (under 10x lens). Heat mediated antigen retrieval with Tris-EDTA buffer (pH 9.0).