

## ALDH1B1 Polyclonal antibody

Catalog Number: 15560-1-AP

11 Publications

## Basic Information

## Catalog Number:

15560-1-AP

## Size:

600 µg/ml

## Source:

Rabbit

## Isotype:

IgG

## Immunogen Catalog Number:

AG7144

## GenBank Accession Number:

BC001619

## GeneID (NCBI):

219

## UNIPROT ID:

P30837

## Full Name:

aldehyde dehydrogenase 1 family, member B1

## Calculated MW:

57 kDa

## Observed MW:

55 kDa

## Purification Method:

Antigen affinity purification

## Recommended Dilutions:

WB 1:1000-1:6000

IP 0.5-4.0 µg for 1.0-3.0 mg of total protein lysate

IHC 1:20-1:200

IF 1:20-1:200

## Applications

## Tested Applications:

IF/ICC, IHC, IP, WB, ELISA

## Cited Applications:

IHC, WB

## Species Specificity:

human, mouse, rat

## Cited Species:

human, rat, mouse

**Note-IHC: suggested antigen retrieval with TE buffer pH 9.0; (\*) Alternatively, antigen retrieval may be performed with citrate buffer pH 6.0**

## Positive Controls:

WB : HepG2 cells, K-562 cells, mouse brain tissue

IP : mouse brain tissue,

IHC : human testis tissue,

IF : HepG2 cells,

## Background Information

Aldehyde dehydrogenases (ALDHs) belong to a superfamily of NAD(P)<sup>+</sup>-dependent enzymes, which catalyze the oxidation of endogenous and exogenous aldehydes to their corresponding acids. ALDH1B1 is a mitochondrial ALDH that it is dramatically upregulated in human colonic adenocarcinoma, making it a potential biomarker for human colon cancer.(PMID:21216231). ALDH1B1 is a homotetramer expressed in various adult and fetal human tissues including liver, testis, kidney, skeletal muscle, heart, placenta, brain and lung(PMID:18611112).

## Notable Publications

Author	Pubmed ID	Journal	Application
Carlos J Diaz Osterman	31478830	Elife	WB
Agustín Hidalgo-Gutiérrez	34680574	Biomedicines	WB
Akane Kasai	35318866	Am J Physiol Regul Integr Comp Physiol	WB

## Storage

## Storage:

Store at -20°C. Stable for one year after shipment.

## Storage Buffer:

PBS with 0.02% sodium azide and 50% glycerol pH 7.3.

Aliquoting is unnecessary for -20°C storage

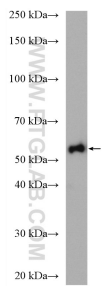
For technical support and original validation data for this product please contact:

T: 4006900926

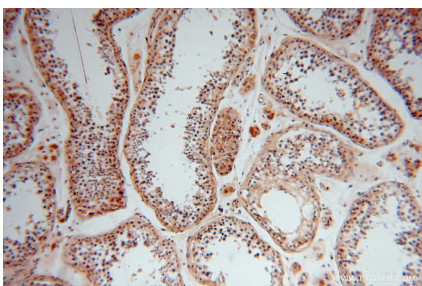
E: [Proteintech-CN@ptglab.com](mailto:Proteintech-CN@ptglab.com)W: [ptgcn.com](http://ptgcn.com)

**This product is exclusively available under Proteintech Group brand and is not available to purchase from any other manufacturer.**

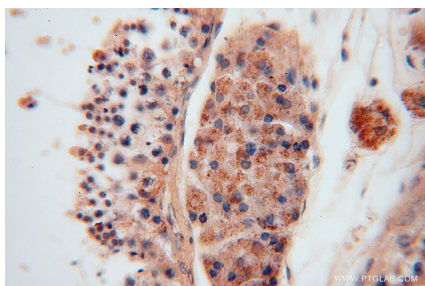
Selected Validation Data



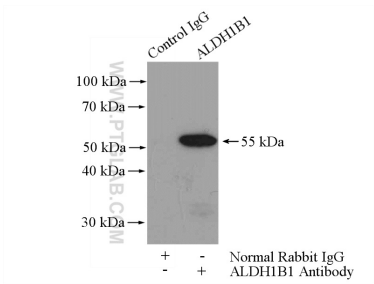
HepG2 cells were subjected to SDS PAGE followed by western blot with 15560-1-AP (ALDH1B1 antibody) at dilution of 1:4000 incubated at room temperature for 1.5 hours.



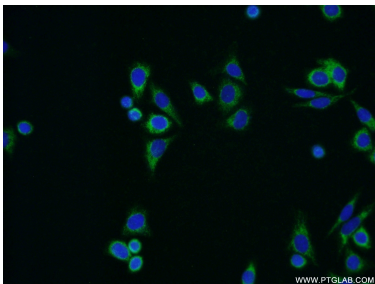
Immunohistochemical analysis of paraffin-embedded human testis using 15560-1-AP (ALDH1B1 antibody) at dilution of 1:100 (under 10x lens).



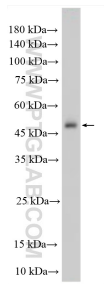
Immunohistochemical analysis of paraffin-embedded human testis using 15560-1-AP (ALDH1B1 antibody) at dilution of 1:100 (under 40x lens).



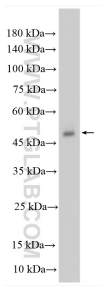
IP result of anti-ALDH1B1 (IP:15560-1-AP, 4ug; Detection:15560-1-AP 1:500) with mouse brain tissue lysate 4000ug.



Immunofluorescent analysis of HepG2 cells using 15560-1-AP (ALDH1B1 antibody) at dilution of 1:50 and Alexa Fluor 488-conjugated AffiniPure Goat Anti-Rabbit IgG(H+L).



K-562 cells were subjected to SDS PAGE followed by western blot with 15560-1-AP (ALDH1B1 antibody) at dilution of 1:6000 incubated at room temperature for 1.5 hours.



HepG2 cells were subjected to SDS PAGE followed by western blot with 15560-1-AP (ALDH1B1 antibody) at dilution of 1:6000 incubated at room temperature for 1.5 hours.