

For Research Use Only

# NDUFA1 Polyclonal antibody

Catalog Number: 15561-1-AP **2 Publications**



## Basic Information

**Catalog Number:**

15561-1-AP

**Size:**

400 ug/ml

**Source:**

Rabbit

**Isotype:**

IgG

**Immunogen Catalog Number:**

AG7206

**GenBank Accession Number:**

BC000266

**GeneID (NCBI):**

4694

**UNIPROT ID:**

O15239

**Full Name:**

NADH dehydrogenase (ubiquinone) 1  
alpha subcomplex, 1, 7.5kDa

**Calculated MW:**

7.5 kDa

**Observed MW:**

7.5 kDa

**Purification Method:**

Antigen affinity purification

**Recommended Dilutions:**

WB 1:500-1:2000

IHC 1:50-1:500

## Applications

**Tested Applications:**

WB, IHC, ELISA

**Cited Applications:**

WB

**Species Specificity:**

human, mouse, rat

**Cited Species:**

human, rat

**Note-IHC: suggested antigen retrieval with TE buffer pH 9.0; (\*) Alternatively, antigen retrieval may be performed with citrate buffer pH 6.0**

**Positive Controls:**

WB : mouse heart tissue, mouse kidney tissue, rat heart tissue, mouse liver tissue

IHC : mouse liver tissue, mouse heart tissue

## Background Information

The NDUFA1 gene encoding the MWFE polypeptide is located on the X chromosome. The NDUFA1 gene product (MWFE protein) is essential for activity of complex I in mammalian mitochondria, and it is predicted to be a membrane protein (PMID: 10200266).

## Notable Publications

Author	Pubmed ID	Journal	Application
Xiaolei Zhang	36178619	Methods Mol Biol	WB
Zhao-Yu Xiang	37334311	Front Endocrinol (Lausanne)	WB

## Storage

**Storage:**

Store at -20°C. Stable for one year after shipment.

**Storage Buffer:**

PBS with 0.02% sodium azide and 50% glycerol pH 7.3.

Aliquoting is unnecessary for -20°C storage

For technical support and original validation data for this product please contact:

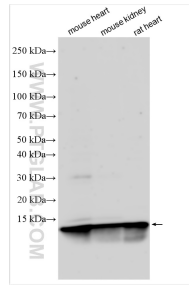
T: 4006900926

E: Proteintech-CN@ptglab.com

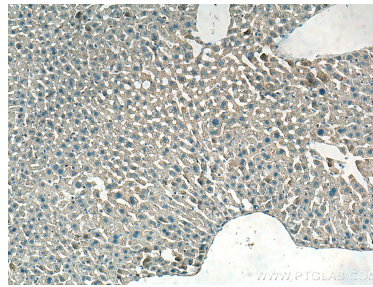
W: ptgcn.com

**This product is exclusively available under Proteintech Group brand and is not available to purchase from any other manufacturer.**

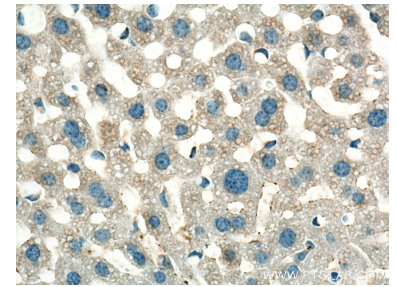
## Selected Validation Data



Various lysates were subjected to SDS PAGE followed by western blot with 15561-1-AP (NDUFA1 antibody) at dilution of 1:1000 incubated at room temperature for 1.5 hours.



Immunohistochemical analysis of paraffin-embedded mouse liver tissue slide using 15561-1-AP (NDUFA1 antibody) at dilution of 1:200 (under 10x lens). Heat mediated antigen retrieval with Tris-EDTA buffer (pH 9.0).



Immunohistochemical analysis of paraffin-embedded mouse liver tissue slide using 15561-1-AP (NDUFA1 antibody) at dilution of 1:200 (under 40x lens). Heat mediated antigen retrieval with Tris-EDTA buffer (pH 9.0).