

For Research Use Only

# CBX2 Polyclonal antibody

Catalog Number:15579-1-AP

Featured Product

9 Publications



## Basic Information

Catalog Number:

15579-1-AP

Size:

650 µg/ml

Source:

Rabbit

Isotype:

IgG

Immunogen Catalog Number:

AG7979

GenBank Accession Number:

BC004252

GeneID (NCBI):

84733

UNIPROT ID:

Q14781

Full Name:

chromobox homolog 2 (Pc class homolog, Drosophila)

Calculated MW:

56 kDa

Observed MW:

65-70 kDa

Purification Method:

Antigen affinity purification

Recommended Dilutions:

WB 1:1000-1:8000

## Applications

Tested Applications:

WB, ELISA

Cited Applications:

WB, IHC, IF

Species Specificity:

Human, Mouse, Rat

Cited Species:

human, mouse

Positive Controls:

WB : HEK-293 cells, mouse heart tissue, HeLa cells, MCF-7 cells, rat heart tissue

## Background Information

The chromobox homologue protein 2 (CBX2) is a critical component of the PRC1 complex involved in antiviral innate immunity, neuronal, and gonadal differentiation, axial patterning during embryonic development, cell proliferation, and senescence (PMID: 32870972). CBX2 has 2 isoforms with the molecular mass of 23 and 56 kDa. Sometimes higher molecular weight around 65-70 kDa can also be observed, which may be a modified variant of CBX2.

## Notable Publications

Author	Pubmed ID	Journal	Application
Xun Huang	30220457	Cell	WB
Shipeng Zheng	30972192	Am J Transl Res	WB,IHC
Jiming Chen	39256572	Oncogene	WB,IHC,IF

## Storage

Storage:

Store at -20°C. Stable for one year after shipment.

Storage Buffer:

PBS with 0.02% sodium azide and 50% glycerol pH 7.3.

Aliquoting is unnecessary for -20°C storage

For technical support and original validation data for this product please contact:

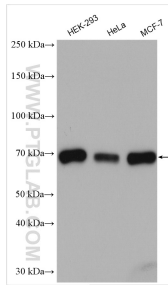
T: 4006900926

E: Proteintech-CN@ptglab.com

W: ptgcn.com

This product is exclusively available under Proteintech Group brand and is not available to purchase from any other manufacturer.

## Selected Validation Data



Various lysates were subjected to SDS PAGE followed by western blot with 15579-1-AP (CBX2 antibody) at dilution of 1:4000 incubated at room temperature for 1.5 hours.