

# NDUFB10 Polyclonal antibody

Catalog Number: 15589-1-AP

Featured Product

9 Publications

## Basic Information

## Catalog Number:

15589-1-AP

## Size:

180 µg/ml

## Source:

Rabbit

## Isotype:

IgG

## Immunogen Catalog Number:

AG7922

## GenBank Accession Number:

BC005829

## GeneID (NCBI):

4716

## UNIPROT ID:

O96000

## Full Name:

NADH dehydrogenase (ubiquinone) 1  
beta subcomplex, 10, 22kDa

## Calculated MW:

22 kDa

## Observed MW:

22 kDa

## Purification Method:

Antigen affinity purification

## Recommended Dilutions:

WB 1:500-1:2000

IP 0.5-4.0 µg for 1.0-3.0 mg of total  
protein lysate

IHC 1:20-1:200

## Applications

## Tested Applications:

IHC, IP, WB, ELISA

## Cited Applications:

WB

## Species Specificity:

human, mouse, rat

## Cited Species:

human, mouse

**Note-IHC: suggested antigen retrieval with  
TE buffer pH 9.0; (\*) Alternatively, antigen  
retrieval may be performed with citrate  
buffer pH 6.0**

## Positive Controls:

WB : HepG2 cells, human skeletal muscle tissue,  
mouse liver tissue

IP : HepG2 cells,

IHC : human liver tissue, human brain tissue, human  
heart tissue, human kidney tissue, human ovary tissue,  
human placenta tissue, human skin tissue, human  
spleen tissue

## Background Information

NDUFB10 (NADH dehydrogenase [ubiquinone] 1 beta subcomplex subunit 10) is also named as PDSW and belongs to the complex I NDUFB10 subunit family. It is an accessory subunit of the mitochondrial membrane respiratory chain NADH dehydrogenase (Complex I), that is believed not to be involved in catalysis. The Complex I functions in the transfer of electrons from NADH to the respiratory chain.

## Notable Publications

Author	Pubmed ID	Journal	Application
Sana Siddiqui	28260693	Aging (Albany NY)	WB
Jin Zhang	27320042	Cell Stem Cell	WB
Bronwen Martin	26834700	Front Endocrinol (Lausanne)	WB

## Storage

## Storage:

Store at -20°C. Stable for one year after shipment.

## Storage Buffer:

PBS with 0.02% sodium azide and 50% glycerol pH 7.3.

Aliquoting is unnecessary for -20°C storage

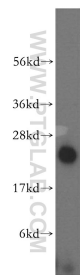
For technical support and original validation data for this product please contact:

T: 4006900926

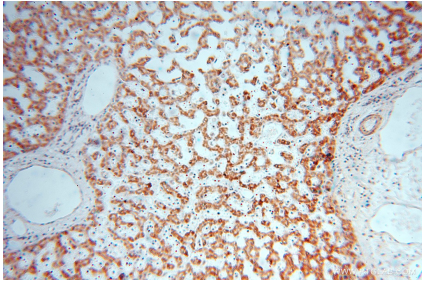
E: [Proteintech-CN@ptglab.com](mailto:Proteintech-CN@ptglab.com)W: [ptgcn.com](http://ptgcn.com)

**This product is exclusively available under Proteintech  
Group brand and is not available to purchase from any  
other manufacturer.**

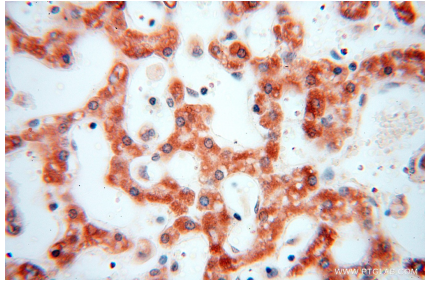
Selected Validation Data



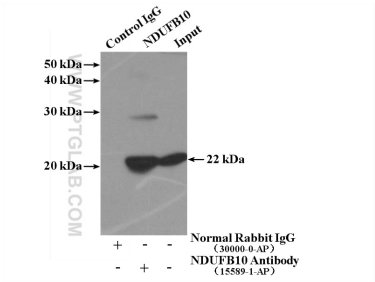
HepG2 cells were subjected to SDS PAGE followed by western blot with 15589-1-AP (NDUFB10 antibody) at dilution of 1:500 incubated at room temperature for 1.5 hours.



Immunohistochemical analysis of paraffin-embedded human liver using 15589-1-AP (NDUFB10 antibody) at dilution of 1:50 (under 10x lens).



Immunohistochemical analysis of paraffin-embedded human liver using 15589-1-AP (NDUFB10 antibody) at dilution of 1:50 (under 40x lens).



IP result of anti-NDUFB10 (IP:15589-1-AP, 4ug; Detection:15589-1-AP 1:1000) with HepG2 cells lysate 1000ug.