

For Research Use Only

CIP29 Polyclonal antibody

Catalog Number: 15798-1-AP **2 Publications**



Basic Information

Catalog Number: 15798-1-AP	GenBank Accession Number: BC007099	Purification Method: Antigen affinity purification
Size: 500 ug/ml	GeneID (NCBI): 84324	Recommended Dilutions: WB 1:5000-1:50000 IHC 1:1500-1:6000 IF/ICC 1:200-1:800
Source: Rabbit	UNIPROT ID: P82979	
Isotype: IgG	Full Name: cytokine induced protein 29 kDa	
Immunogen Catalog Number: AG8507	Calculated MW: 210 aa, 24 kDa	
	Observed MW: 29-32 kDa	

Applications

Tested Applications: WB, IHC, IF/ICC, ELISA	Positive Controls: WB : HEK-293 cells, Raji cells, rat pancreas tissue, HeLa cells, MCF-7 cells IHC : human stomach cancer tissue, IF/ICC : MCF-7 cells,
Cited Applications: WB, IF	
Species Specificity: human, mouse, rat	
Cited Species: human	
Note-IHC: suggested antigen retrieval with TE buffer pH 9.0; (*) Alternatively, antigen retrieval may be performed with citrate buffer pH 6.0	

Background Information

Notable Publications

Author	Pubmed ID	Journal	Application
Lingcai Zhao	36084138	PLoS Pathog	WB,IF
Ying Zhu	27492604	Tumour Biol	WB

Storage

Storage:
Store at -20°C. Stable for one year after shipment.
Storage Buffer:
PBS with 0.02% sodium azide and 50% glycerol pH 7.3.
Aliquoting is unnecessary for -20°C storage

For technical support and original validation data for this product please contact:

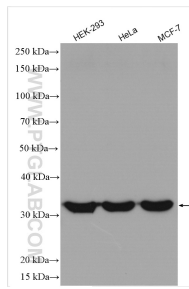
T: 4006900926

E: Proteintech-CN@ptglab.com

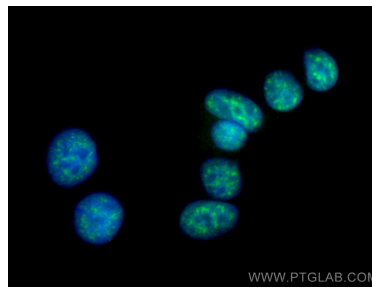
W: ptgcn.com

This product is exclusively available under Proteintech Group brand and is not available to purchase from any other manufacturer.

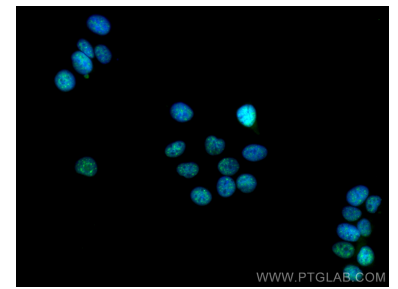
Selected Validation Data



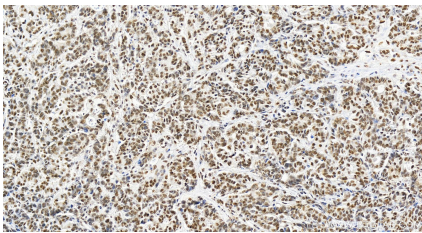
Various lysates were subjected to SDS PAGE followed by western blot with 15798-1-AP (CIP29 antibody) at dilution of 1:15000 incubated at room temperature for 1.5 hours.



Immunofluorescent analysis of (4% PFA) fixed MCF-7 cells using CIP29 antibody (15798-1-AP) at dilution of 1:400 and CoraLite®488-Conjugated AffiniPure Goat Anti-Rabbit IgG(H+L).



Immunofluorescent analysis of (4% PFA) fixed MCF-7 cells using CIP29 antibody (15798-1-AP) at dilution of 1:400 and CoraLite®488-Conjugated AffiniPure Goat Anti-Rabbit IgG(H+L).



Immunohistochemical analysis of paraffin-embedded human stomach cancer tissue slide using 15798-1-AP (CIP29 antibody) at dilution of 1:3000 (under 20x lens). Heat mediated antigen retrieval with Tris-EDTA buffer (pH 9.0).