

For Research Use Only

Carboxypeptidase A1 Polyclonal antibody, PBS Only

Catalog Number: 15836-1-PBS



Basic Information

Catalog Number: 15836-1-PBS	GenBank Accession Number: BC005279	Purification Method: Antigen affinity purification
Size: 1 mg/ml	GeneID (NCBI): 1357	
Source: Rabbit	UNIPROT ID: P15085	
Isotype: IgG	Full Name: carboxypeptidase A1 (pancreatic)	
Immunogen Catalog Number: AG8586	Calculated MW: 419 aa, 47 kDa	
	Observed MW: 47 kDa	

Applications

Tested Applications:
WB, IHC, IF/ICC, Indirect ELISA

Species Specificity:
human, mouse, rat

Background Information

CPA1(Carboxypeptidase A1) is also named as CPA and belongs to the the peptidase M14 family. CPA1 is one of the genes whose expression in the pancreas and the protein which it encodes is synthesized as an inactive precursor, proCPA1, which is processed to the active enzyme by the proteolytic removal of the 95-amino acid N-terminal prodomain. The mature CPA1 is not secreted and is trapped and degraded intracellularly(PMID:8639628). This antibody is speicific to CPA1.

Storage

Storage:
Store at -80°C.
The product is shipped with ice packs. Upon receipt, store it immediately at -80°C

Storage Buffer:
PBS Only

For technical support and original validation data for this product please contact:

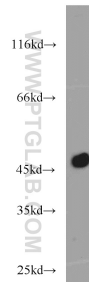
T: 4006900926

E: Proteintech-CN@ptglab.com

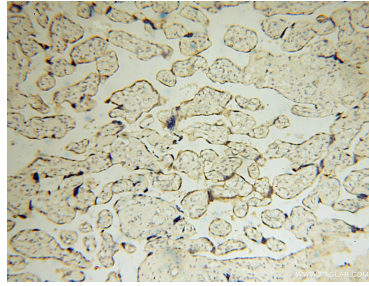
W: ptgcn.com

This product is exclusively available under Proteintech Group brand and is not available to purchase from any other manufacturer.

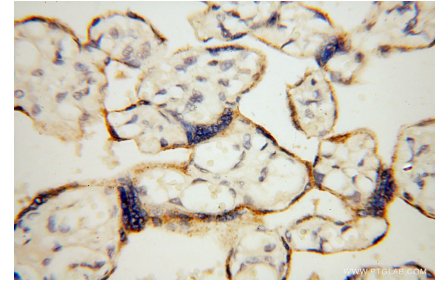
Selected Validation Data



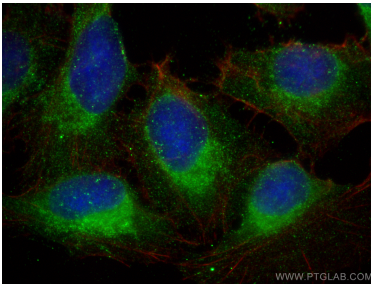
mouse pancreas tissue were subjected to SDS PAGE followed by western blot with 15836-1-AP (Carboxypeptidase A1 antibody) at dilution of 1:3000 incubated at room temperature for 1.5 hours. This data was developed using the same antibody clone with 15836-1-PBS in a different storage buffer formulation.



Immunohistochemical analysis of paraffin-embedded human placenta using 15836-1-AP (Carboxypeptidase A1 antibody) at dilution of 1:100 (under 10x lens). This data was developed using the same antibody clone with 15836-1-PBS in a different storage buffer formulation.



Immunohistochemical analysis of paraffin-embedded human placenta using 15836-1-AP (Carboxypeptidase A1 antibody) at dilution of 1:100 (under 40x lens). This data was developed using the same antibody clone with 15836-1-PBS in a different storage buffer formulation.



Immunofluorescent analysis of (-20°C Ethanol) fixed U2OS cells using Carboxypeptidase A1 antibody (15836-1-AP) at dilution of 1:400 and Multi-rAb CoraLite @ Plus 488-Goat Anti-Rabbit Recombinant Secondary Antibody (H+L) (RGAR002), CL594-Phalloidin (red). This data was developed using the same antibody clone with 15836-1-PBS in a different storage buffer formulation.