

For Research Use Only

# RPS27L Polyclonal antibody

Catalog Number:15871-1-AP

2 Publications



## Basic Information

**Catalog Number:**

15871-1-AP

**Size:**

700 ug/ml

**Source:**

Rabbit

**Isotype:**

IgG

**Immunogen Catalog Number:**

AG8628

**GenBank Accession Number:**

BC003667

**GeneID (NCBI):**

51065

**UNIPROT ID:**

Q71UM5

**Full Name:**

ribosomal protein S27-like

**Calculated MW:**

84 aa, 10 kDa

**Observed MW:**

10 kDa

**Purification Method:**

Antigen affinity purification

**Recommended Dilutions:**

WB 1:200-1:1000

IP 0.5-4.0 ug for 1.0-3.0 mg of total protein lysate

IHC 1:50-1:500

IF/ICC 1:50-1:500

## Applications

**Tested Applications:**

WB, IHC, IF/ICC, IP, ELISA

**Cited Applications:**

WB

**Species Specificity:**

human, mouse, rat

**Cited Species:**

human, mouse

**Note-IHC:** suggested antigen retrieval with **TE buffer pH 9.0; (\*) Alternatively, antigen retrieval may be performed with citrate buffer pH 6.0**

**Positive Controls:**

**WB:** SH-SY5Y cells, mouse brain tissue, human heart tissue, HepG2 cells

**IP:** SH-SY5Y cells,

**IHC:** human stomach tissue,

**IF/ICC:** SH-SY5Y cells,

## Background Information

### Notable Publications

Author	Pubmed ID	Journal	Application
Adele Francis Xu	37306301	Elife	WB
Elena B Tikhonova	36210597	J Mol Biol	WB

## Storage

**Storage:**

Store at -20°C. Stable for one year after shipment.

**Storage Buffer:**

PBS with 0.02% sodium azide and 50% glycerol pH 7.3.

Aliquoting is unnecessary for -20°C storage

For technical support and original validation data for this product please contact:

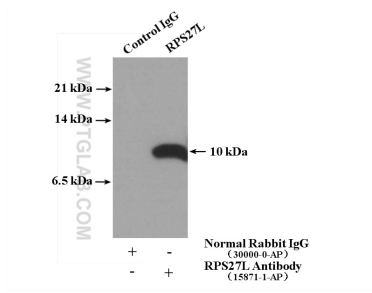
T: 4006900926

E: [Proteintech-CN@ptglab.com](mailto:Proteintech-CN@ptglab.com)

W: [ptgcn.com](http://ptgcn.com)

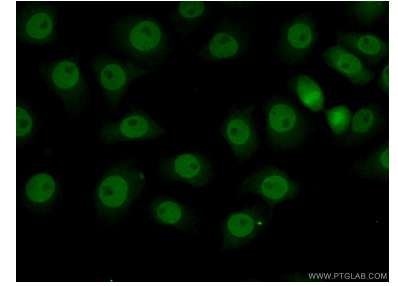
**This product is exclusively available under Proteintech Group brand and is not available to purchase from any other manufacturer.**

## Selected Validation Data

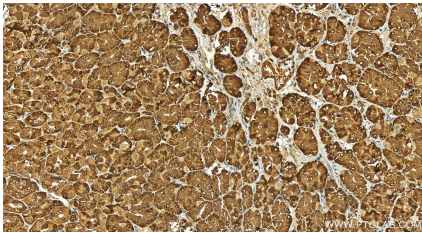


IP result of anti-RPS27L (IP:15871-1-AP, 4ug; Detection:15871-1-AP 1:300) with SH-SY5Y cells lysate 2160 ug.

SH-SY5Y cells were subjected to SDS PAGE followed by western blot with 15871-1-AP (RPS27L antibody) at dilution of 1:300 incubated at room temperature for 1.5 hours.



Immunofluorescent analysis of (10% Formaldehyde) fixed SH-SY5Y cells using 15871-1-AP (RPS27L antibody) at dilution of 1:50 and Alexa Fluor 488-conjugated AffiniPure Goat Anti-Rabbit IgG(H+L).



Immunohistochemical analysis of paraffin-embedded human stomach tissue slide using 15871-1-AP (RPS27L antibody) at dilution of 1:200 (under 20x lens). Heat mediated antigen retrieval with Tris-EDTA buffer (pH 9.0).