

Glycophorin A Polyclonal antibody

Catalog Number: 15874-1-AP

Basic Information

Catalog Number: 15874-1-AP	GenBank Accession Number: BC005319	Purification Method: Antigen affinity purification
Size: 650 µg/ml	GeneID (NCBI): 2993	Recommended Dilutions: WB 1:500-1:1000
Source: Rabbit	UNIPROT ID: P02724	IHC 1:50-1:500
Isotype: IgG	Full Name: glycophorin A (MNS blood group)	IF 1:300-1:1200
Immunogen Catalog Number: AG8635	Calculated MW: 150 aa, 16 kDa	
	Observed MW: 36-38 kDa	

Applications

Tested Applications:
FC, IF-P, IHC, WB, ELISA

Species Specificity:
human

Note-IHC: suggested antigen retrieval with **TE buffer pH 9.0; (*) Alternatively, antigen retrieval may be performed with citrate buffer pH 6.0**

Positive Controls:

WB : K-562 cells,

IHC : human spleen tissue, human lung tissue, human colon cancer tissue

IF : human placenta tissue,

Background Information

Glycophorin A (GYPA) is the major transmembrane sialoglycoprotein in erythrocytes. It is a dimeric type I transmembrane protein carrying 15 closely clustered O-linked tetrasaccharides capped with sialic acid/N-acetylneuraminic acid (Neu5Ac). This 36 kDa protein represents the major sialoglycoprotein of the red blood cell membrane displaying about one million copies per cell. (PMID: 9490702)

Storage

Storage:

Store at -20°C. Stable for one year after shipment.

Storage Buffer:

PBS with 0.02% sodium azide and 50% glycerol pH 7.3.

Aliquoting is unnecessary for -20°C storage

For technical support and original validation data for this product please contact:

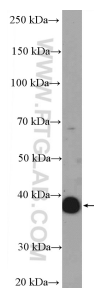
T: 4006900926

E: Proteintech-CN@ptglab.com

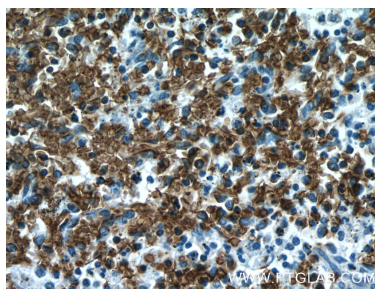
W: ptgcn.com

This product is exclusively available under Proteintech Group brand and is not available to purchase from any other manufacturer.

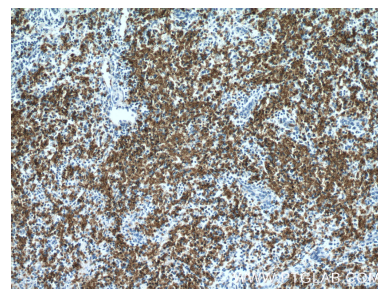
Selected Validation Data



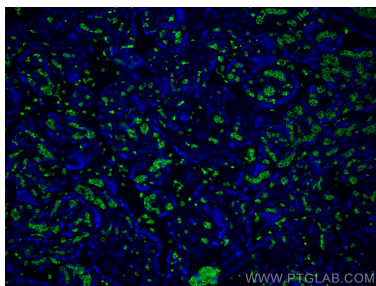
K-562 cells were subjected to SDS PAGE followed by western blot with 15874-1-AP (Glycophorin A antibody) at dilution of 1:600 incubated at room temperature for 1.5 hours.



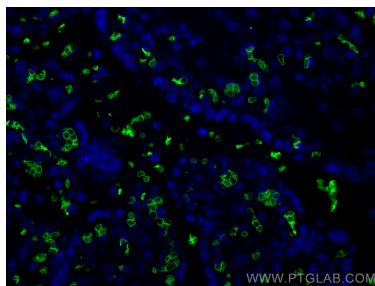
Immunohistochemical analysis of paraffin-embedded human spleen tissue slide using 15874-1-AP (Glycophorin A antibody) at dilution of 1:200 (under 40x lens).



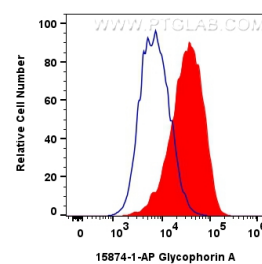
Immunohistochemical analysis of paraffin-embedded human spleen tissue slide using 15874-1-AP (Glycophorin A antibody) at dilution of 1:200 (under 10x lens).



Immunofluorescent analysis of (4% PFA) fixed human placenta tissue using Glycophorin A antibody (15874-1-AP) at dilution of 1:600 and CoraLite®488-Conjugated AffiniPure Goat Anti-Rabbit IgG(H+L).



Immunofluorescent analysis of (4% PFA) fixed human placenta tissue using Glycophorin A antibody (15874-1-AP) at dilution of 1:600 and CoraLite®488-Conjugated AffiniPure Goat Anti-Rabbit IgG(H+L).



1×10^6 K-562 cells were intracellularly stained with 0.4 ug Anti-Human Glycophorin A (15874-1-AP)(red), or 0.4 ug Rabbit IgG control Rabbit PolyAb (30000-O-AP). Cells were not fixed.