

For Research Use Only

PPP2R1A Polyclonal antibody

Catalog Number: 15882-1-AP

Featured Product

7 Publications



Basic Information

Catalog Number:

15882-1-AP

Size:

400 µg/ml

Source:

Rabbit

Isotype:

IgG

Immunogen Catalog Number:

AG8661

GenBank Accession Number:

BC001537

GeneID (NCBI):

5518

UNIPROT ID:

P30153

Full Name:

protein phosphatase 2 (formerly 2A), regulatory subunit A, alpha isoform

Calculated MW:

589 aa, 65 kDa

Observed MW:

65 kDa

Purification Method:

Antigen affinity purification

Recommended Dilutions:

WB 1:500-1:2000

IP 0.5-4.0 µg for 1.0-3.0 mg of total protein lysate

IHC 1:20-1:200

IF 1:200-1:800

Applications

Tested Applications:

WB, IP, IF/ICC, IHC, ELISA

Cited Applications:

WB, ColP

Species Specificity:

human, mouse, rat

Cited Species:

human, mouse, pig

Note-IHC: suggested antigen retrieval with TE buffer pH 9.0; (*) Alternatively, antigen retrieval may be performed with citrate buffer pH 6.0

Positive Controls:

WB: rat liver tissue, mouse kidney tissue, A431 cells, SMMC-7721 cells, HepG2 cells, L02 cells, mouse liver tissue, mouse testis tissue

IP: HepG2 cells,

IHC: human kidney tissue, human ovary tumor tissue

IF: HEK-293 cells,

Background Information

PPP2R1A belongs to the phosphatase 2A regulatory subunit A family. PPP2R1A encodes the α -isoform of the scaffolding subunit of the serine/threonine protein phosphatase 2A (PP2A) holoenzyme. This tumour suppressor complex is involved in growth and survival pathways and PPP2R1A mutations in endometrial high-grade serous carcinomas are a frequent and potentially targetable feature of this disease (PMID: 21381030). The PPP2R1A gene has 86% identity with the PPP2R1B gene (PMID: 7681822).

Notable Publications

Author	Pubmed ID	Journal	Application
Hai Zheng	33243860	Science	WB
Changsheng Jiang	36094311	Microbiol Spectr	WB, ColP
Shibin Hu	34534457	Mol Cell	WB

Storage

Storage:

Store at -20°C. Stable for one year after shipment.

Storage Buffer:

PBS with 0.02% sodium azide and 50% glycerol pH 7.3.

Aliquoting is unnecessary for -20°C storage

For technical support and original validation data for this product please contact:

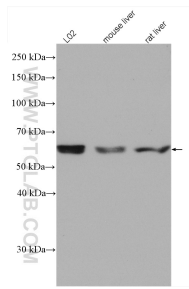
T: 4006900926

E: Proteintech-CN@ptglab.com

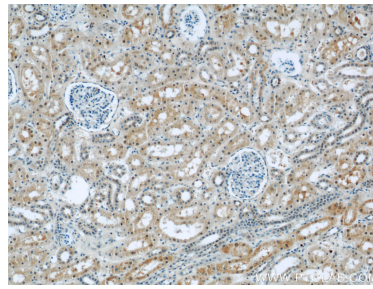
W: ptgcn.com

This product is exclusively available under Proteintech Group brand and is not available to purchase from any other manufacturer.

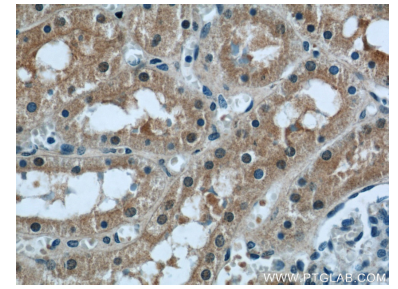
Selected Validation Data



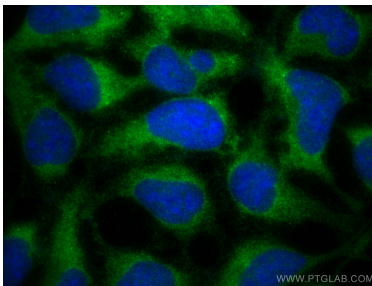
Various lysates were subjected to SDS PAGE followed by western blot with 15882-1-AP (PPP2R1A antibody) at dilution of 1:1000 incubated at room temperature for 1.5 hours.



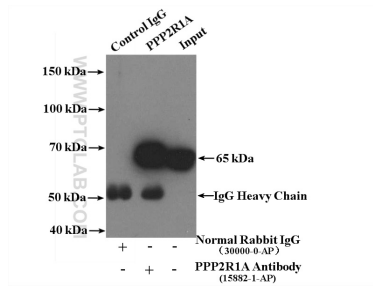
Immunohistochemical analysis of paraffin-embedded human kidney using 15882-1-AP (PPP2R1A antibody) at dilution of 1:50 (under 10x lens).



Immunohistochemical analysis of paraffin-embedded human kidney using 15882-1-AP (PPP2R1A antibody) at dilution of 1:50 (under 40x lens).



Immunofluorescent analysis of (-20°C Ethanol) fixed HEK-293 cells using PPP2R1A antibody (15882-1-AP) at dilution of 1:400 and Multi-rAb CoraLite® Plus 488-Goat Anti-Rabbit Recombinant Secondary Antibody (H+L) (RGAR002).



IP result of anti-PPP2R1A (IP:15882-1-AP, 4ug; Detection:15882-1-AP 1:300) with HepG2 cells lysate 3200ug.