

For Research Use Only

ISG15 Polyclonal antibody

Catalog Number: 15981-1-AP

Featured Product

74 Publications



Basic Information

Catalog Number:

15981-1-AP

Concentration:

450 µg/ml

Source:

Rabbit

Isotype:

IgG

Immunogen Catalog Number:

AG8782

GenBank Accession Number:

BC009507

GeneID (NCBI):

9636

UNIPROT ID:

P05161

Full Name:

ISG15 ubiquitin-like modifier

Calculated MW:

165 aa, 18 kDa

Observed MW:

15-17 kDa

Purification Method:

Antigen affinity purification

Recommended Dilutions:

WB: 1:1000-1:4000

IHC: 1:50-1:500

IF-P: 1:50-1:500

IF/ICC: 1:50-1:500

Applications

Tested Applications:

WB, IHC, IF/ICC, IF-P, ELISA

Cited Applications:

WB, IHC, IF, IP, CoIP, RIP

Species Specificity:

human, mouse

Cited Species:

human, mouse, pig, monkey, goat

Note-IHC: suggested antigen retrieval with TE buffer pH 9.0; (*) Alternatively, antigen retrieval may be performed with citrate buffer pH 6.0

Positive Controls:

WB: HeLa cells, human brain tissue, A549 cells, MCF-7 cells, PC-3 cells, IFN alpha treated A459 cells, HepG2 cells, IFN alpha treated HepG2 cells

IHC: human lung cancer tissue, human pancreas cancer tissue

IF-P: mouse brain tissue,

IF/ICC: HeLa cells,

Background Information

ISG15 is a ubiquitin-like protein that becomes conjugated to many cellular proteins upon activation by interferon-alpha (IFNA) and -beta (IFNB). ISG15 forms covalent conjugates with its target proteins in a process called ISGylation, which in mammals is known to play a role in antiviral immunity. ISG15 proteins possess two ubiquitin-like (UBL) domains and a highly conserved C-terminal LRGG sequence, the latter being known as the ubiquitin conjugation motif. Intracellular ISG15 are conjugated, via the LRGG motif, to target proteins through a process called ISGylation, which resembles largely ubiquitination, the process of formation of ubiquitin conjugates. Unconjugated extracellular ISG15, which are released from several types of human and murine cells, are known to possess cytokine-like activity.

Notable Publications

Author	Pubmed ID	Journal	Application
Zemin Zhu	36175845	BMC Mol Cell Biol	WB
Dulcemaria Hernandez	36154443	mBio	WB
Stephen C Walsh	36084633	Cell Host Microbe	WB

Storage

Storage:

Store at -20°C. Stable for one year after shipment.

Storage Buffer:

PBS with 0.02% sodium azide and 50% glycerol, pH7.3

Aliquoting is unnecessary for -20°C storage

For technical support and original validation data for this product please contact:

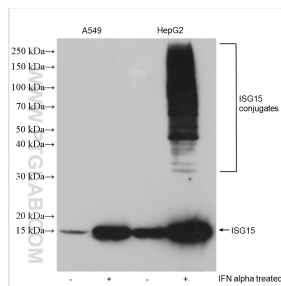
T: 4006900926

E: Proteintech-CN@ptglab.com

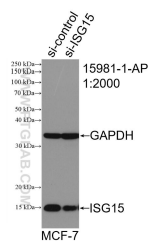
W: ptgcn.com

This product is exclusively available under Proteintech Group brand and is not available to purchase from any other manufacturer.

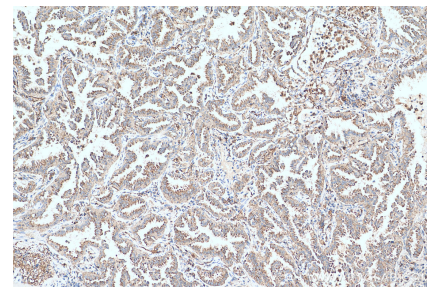
Selected Validation Data



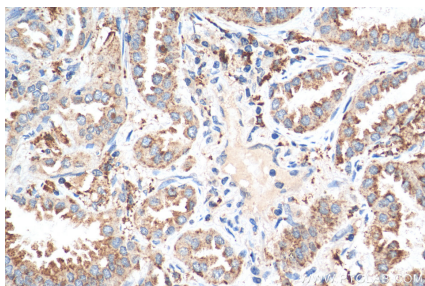
Untreated and IFN alpha treated A459 cells, untreated and IFN alpha treated HepG2 cells were subjected to SDS PAGE followed by western blot with 15981-1-AP (ISG15 antibody) at dilution of 1:2500 incubated at room temperature for 1.5 hours.



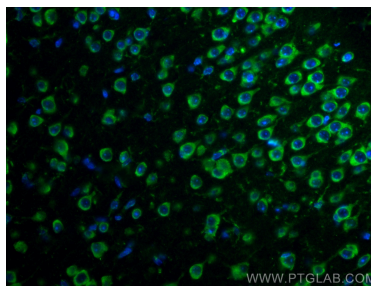
WB result of ISG15 antibody (15981-1-AP; 1:1000; incubated at room temperature for 1.5 hours) with sh-Control and sh-ISG15 transfected MCF-7 cells.



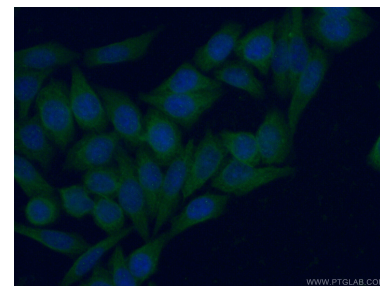
Immunohistochemical analysis of paraffin-embedded human lung cancer tissue slide using 15981-1-AP (ISG15 antibody) at dilution of 1:200 (under 10x lens). Heat mediated antigen retrieval with Tris-EDTA buffer (pH 9.0).



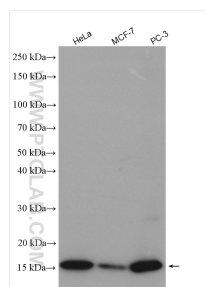
Immunohistochemical analysis of paraffin-embedded human lung cancer tissue slide using 15981-1-AP (ISG15 antibody) at dilution of 1:200 (under 40x lens). Heat mediated antigen retrieval with Tris-EDTA buffer (pH 9.0).



Immunofluorescent analysis of (4% PFA) fixed mouse brain tissue using ISG15 antibody (15981-1-AP) at dilution of 1:200 and Coralite®488-Conjugated Goat Anti-Rabbit IgG(H+L).



Immunofluorescent analysis of (-20°C Ethanol) fixed HeLa cells using 15981-1-AP (ISG15 antibody) at dilution of 1:50 and Alexa Fluor 488-conjugated Goat Anti-Rabbit IgG(H+L).



Various lysates were subjected to SDS PAGE followed by western blot with 15981-1-AP (ISG15 antibody) at dilution of 1:2000 incubated at room temperature for 1.5 hours.