

GALM Polyclonal antibody

Catalog Number: 16022-1-AP

Featured Product

2 Publications

Basic Information

Catalog Number:

16022-1-AP

Size:

800 µg/ml

Source:

Rabbit

Isotype:

IgG

Immunogen Catalog Number:

AG8842

GenBank Accession Number:

BC019263

GeneID (NCBI):

130589

UNIPROT ID:

Q96C23

Full Name:

galactose mutarotase (aldose 1-epimerase)

Calculated MW:

342 aa, 38 kDa

Observed MW:

38 kDa

Purification Method:

Antigen affinity purification

Recommended Dilutions:

WB 1:1000-1:8000

IHC 1:20-1:200

Applications

Tested Applications:

IHC, WB, ELISA

Cited Applications:

WB, IHC

Species Specificity:

human, mouse

Cited Species:

human

Note-IHC: suggested antigen retrieval with TE buffer pH 9.0; (*) Alternatively, antigen retrieval may be performed with citrate buffer pH 6.0

Positive Controls:

WB : HeLa cells, HepG2 cells

IHC : human heart tissue, human brain tissue, human spleen tissue, mouse spleen tissue

Background Information

GALM, also named as Aldose 1-epimerase, belongs to the aldose epimerase family. GALM is a mutarotase that catalyzes the interconversion of beta-D-galactose and alpha-D-galactose during galactose metabolism. GALM is involved in the maintenance of the equilibrium between the beta- and alpha- anomers of galactose, therefore ensuring a sufficient supply of the alpha-anomer for GALK1. Galm is also active on D-glucose, but its preference for galactose is higher than that of glucose. The calculated molecular weight of GALM is 38 kDa.

Notable Publications

Author	Pubmed ID	Journal	Application
Yoichi Wada	30451973	Genet Med	WB
Jiacheng Xu	35127693	Front Cell Dev Biol	WB,IHC

Storage

Storage:

Store at -20°C. Stable for one year after shipment.

Storage Buffer:

PBS with 0.02% sodium azide and 50% glycerol pH 7.3.

Aliquoting is unnecessary for -20°C storage

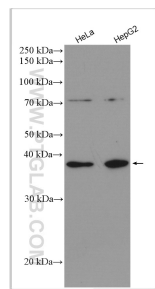
For technical support and original validation data for this product please contact:

T: 4006900926

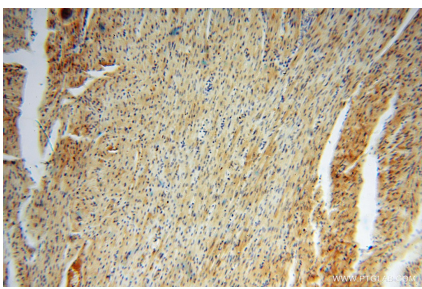
E: Proteintech-CN@ptglab.comW: ptgcn.com

This product is exclusively available under Proteintech Group brand and is not available to purchase from any other manufacturer.

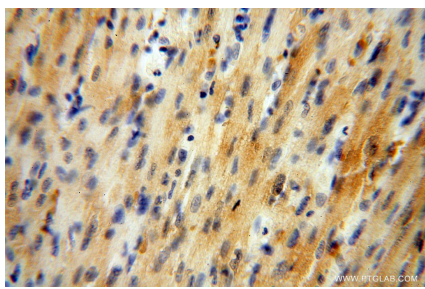
Selected Validation Data



Various lysates were subjected to SDS PAGE followed by western blot with 16022-1-AP (GALM antibody) at dilution of 1:4000 incubated at room temperature for 1.5 hours.



Immunohistochemical analysis of paraffin-embedded human heart using 16022-1-AP (GALM antibody) at dilution of 1:50 (under 10x lens).



Immunohistochemical analysis of paraffin-embedded human heart using 16022-1-AP (GALM antibody) at dilution of 1:50 (under 40x lens).