

For Research Use Only

# SEC24C Polyclonal antibody

Catalog Number: 16073-1-AP



## Basic Information

**Catalog Number:**

16073-1-AP

**Size:**

133 µg/ml

**Source:**

Rabbit

**Isotype:**

IgG

**Immunogen Catalog Number:**

AG9030

**GenBank Accession Number:**

BC018928

**GeneID (NCBI):**

9632

**UNIPROT ID:**

P53992

**Full Name:**

SEC24 family, member C (S. cerevisiae)

**Calculated MW:**

1094 aa, 118 kDa

**Observed MW:**

110-120 kDa

**Purification Method:**

Antigen affinity purification

**Recommended Dilutions:**

WB 1:500-1:1000

IF/ICC 1:10-1:100

## Applications

**Tested Applications:**

IF/ICC, WB, ELISA

**Species Specificity:**

human, mouse, rat

**Positive Controls:**

WB : HeLa cells,

IF/ICC : HeLa cells,

## Background Information

COPII-coated vesicles mediate anterograde transport from the ER to the Golgi apparatus. COPII is composed of three parts: two coat protein complexes (Sec23/24 complex and Sec13/31 complex) and one small GTP-binding protein, Sar1 (PMID: 9568718). Sec24 subunit of the coat complex has been implicated in cargo recognition (PMID: 17316621). In mammal cells there are four Sec24 isoforms, termed Sec24A, Sec24B, Sec24C, and Sec24D (PMID: 10329445).

## Storage

**Storage:**

Store at -20°C. Stable for one year after shipment.

**Storage Buffer:**

PBS with 0.02% sodium azide and 50% glycerol pH 7.3.

Aliquoting is unnecessary for -20°C storage

For technical support and original validation data for this product please contact:

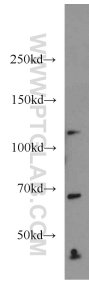
T: 4006900926

E: [Proteintech-CN@ptglab.com](mailto:Proteintech-CN@ptglab.com)

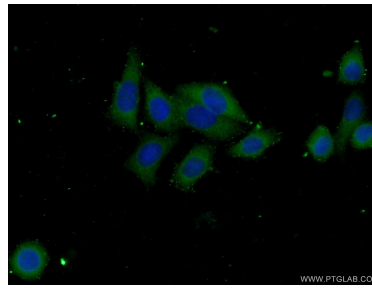
W: [ptgcn.com](http://ptgcn.com)

This product is exclusively available under Proteintech Group brand and is not available to purchase from any other manufacturer.

## Selected Validation Data



HeLa cells were subjected to SDS PAGE followed by western blot with 16073-1-AP (SEC24C antibody) at dilution of 1:500 incubated at room temperature for 1.5 hours.



Immunofluorescent analysis of (-20°C Ethanol) fixed HeLa cells using 16073-1-AP (SEC24C antibody) at dilution of 1:25 and Alexa Fluor 488-conjugated AffiniPure Goat Anti-Rabbit IgG(H+L).