

For Research Use Only

# TMEM141 Polyclonal antibody

Catalog Number: 16092-1-AP **1 Publications**



## Basic Information

<b>Catalog Number:</b> 16092-1-AP	<b>GenBank Accession Number:</b> BC007834	<b>Purification Method:</b> Antigen affinity purification
<b>Size:</b> 400 µg/ml	<b>GeneID (NCBI):</b> 85014	<b>Recommended Dilutions:</b> WB 1:500-1:3000 IF/ICC 1:20-1:200
<b>Source:</b> Rabbit	<b>UNIPROT ID:</b> Q96145	
<b>Isotype:</b> IgG	<b>Full Name:</b> transmembrane protein 141	
<b>Immunogen Catalog Number:</b> AG8341	<b>Calculated MW:</b> 108 aa, 12 kDa	
	<b>Observed MW:</b> 12 kDa	

## Applications

<b>Tested Applications:</b> IF/ICC, WB, ELISA	<b>Positive Controls:</b> WB : HeLa cells, MCF-7 cells IF/ICC : HeLa cells,
<b>Cited Applications:</b> WB, IF	
<b>Species Specificity:</b> human	
<b>Cited Species:</b> human, mouse	

## Background Information

### Notable Publications

Author	Pubmed ID	Journal	Application
Liwei Sun	37837560	Front Med	WB,IF

## Storage

**Storage:**  
Store at -20°C. Stable for one year after shipment.  
**Storage Buffer:**  
PBS with 0.02% sodium azide and 50% glycerol pH 7.3.  
Aliquoting is unnecessary for -20°C storage

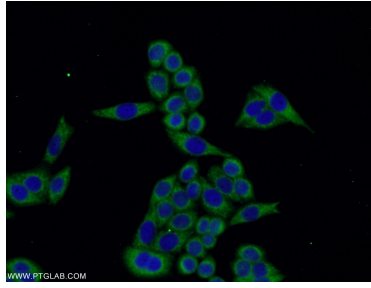
For technical support and original validation data for this product please contact:  
T: 4006900926 E: Proteintech-CN@ptglab.com W: ptgcn.com

This product is exclusively available under Proteintech Group brand and is not available to purchase from any other manufacturer.

## Selected Validation Data



HeLa cells were subjected to SDS PAGE followed by western blot with 16092-1-AP (TMEM141 antibody) at dilution of 1:500 incubated at room temperature for 1.5 hours.



Immunofluorescent analysis of HeLa cells using 16092-1-AP (TMEM141 antibody) at dilution of 1:50 and Alexa Fluor 488-conjugated AffiniPure Goat Anti-Rabbit IgG(H+L).