

For Research Use Only

# KRAS-2A-specific Polyclonal antibody, PBS Only

Catalog Number: 16156-1-PBS



## Basic Information

**Catalog Number:**

16156-1-PBS

**Size:**

1 mg/ml

**Source:**

Rabbit

**Isotype:**

IgG

**GenBank Accession Number:**

NM\_033360

**GeneID (NCBI):**

3845

**UNIPROT ID:**

P01116

**Full Name:**

v-Ki-ras2 Kirsten rat sarcoma viral  
oncogene homolog

**Calculated MW:**

21 kDa

**Observed MW:**

21-24 kDa

**Purification Method:**

Antigen affinity purification

## Applications

**Tested Applications:**

WB, IHC, IF/ICC, FC (Intra), Indirect ELISA

**Species Specificity:**

human, mouse

## Background Information

RAS (derived from 'RAr Sarcoma' virus) gene family includes KRAS, HRAS, and NRAS. These genes encode very similar 21 kDa proteins and are homologs of rodent sarcoma virus genes that have transforming abilities. KRAS has two isoforms, 2A and 2B. This antibody is specific for KRAS-2A, which also named as KRAS-4A .

## Storage

**Storage:**

Store at -80°C.

**The product is shipped with ice packs. Upon receipt, store it immediately at -80°C**

**Storage Buffer:**

PBS Only

For technical support and original validation data for this product please contact:

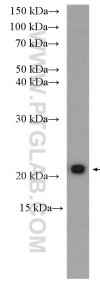
T: 4006900926

E: [Proteintech-CN@ptglab.com](mailto:Proteintech-CN@ptglab.com)

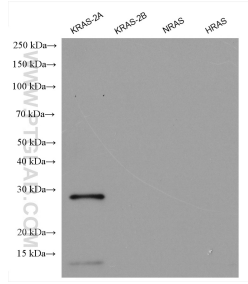
W: [ptgcn.com](http://ptgcn.com)

**This product is exclusively available under Proteintech Group brand and is not available to purchase from any other manufacturer.**

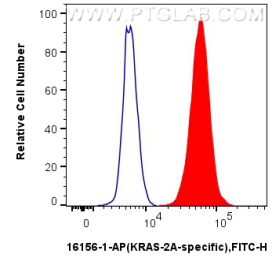
## Selected Validation Data



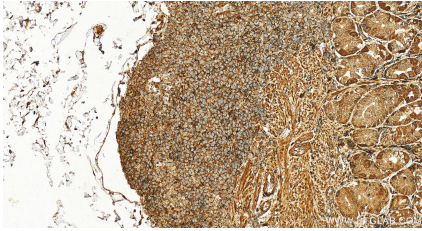
NIH/3T3 cells were subjected to SDS PAGE followed by western blot with 16156-1-AP (KRAS-2A-specific antibody) at dilution of 1:600 incubated at room temperature for 1.5 hours. This data was developed using the same antibody clone with 16156-1-PBS in a different storage buffer formulation.



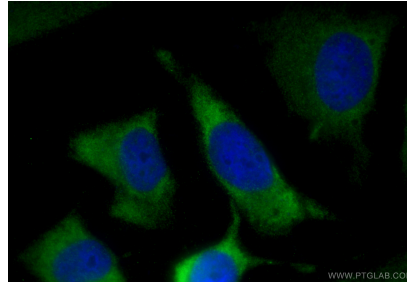
Recombinant proteins (ag27444 (6<sup>\*</sup>His tag-KRAS-2A), ag21645(6<sup>\*</sup>His tag-KRAS-2B), ag29746(6<sup>\*</sup>His tag-NRAS), ag23265(GST-HRAS)) were subjected to SDS PAGE followed by western blot with 16155-1-AP (KRAS-2B-specific antibody) at dilution of 1:2000 incubated at room temperature for 1.5 hours. This data was developed using the same antibody clone with 16156-1-PBS in a different storage buffer formulation.



1X10<sup>6</sup> HeLa cells were intracellularly stained with 0.4 ug Anti-Human KRAS-2A-specific (16156-1-AP) and CoraLite® 488-Conjugated AffiniPure Goat Anti-Rabbit IgG(H+L) at dilution 1:1000 (red), or 0.4 ug Rabbit IgG control Rabbit PolyAb (30000-O-AP, Clone: ) (blue). Cells were fixed with 4% PFA and permeabilized with Flow Cytometry Perm Buffer (PF00011-C). This data was developed using the same antibody clone with 16156-1-PBS in a different storage buffer formulation.



Immunohistochemical analysis of paraffin-embedded human stomach tissue slide using 16156-1-AP (KRAS-2A-specific antibody) at dilution of 1:200 (under 20x lens). Heat mediated antigen retrieval with Tris-EDTA buffer (pH 9.0). This data was developed using the same antibody clone with 16156-1-PBS in a different storage buffer formulation.



Immunofluorescent analysis of (-20°C Ethanol) fixed HeLa cells using KRAS-2A-specific antibody (16156-1-AP) at dilution of 1:400 and Multi-rAb CoraLite® Plus 488-Goat Anti-Rabbit Recombinant Secondary Antibody (H+L) (RGAR002). This data was developed using the same antibody clone with 16156-1-PBS in a different storage buffer formulation.