

For Research Use Only

# RAB31-specific Polyclonal antibody



Catalog Number: 16182-1-AP

Featured Product

11 Publications

## Basic Information

**Catalog Number:**

16182-1-AP

**Size:**

350 µg/ml

**Source:**

Rabbit

**Isotype:**

IgG

**GenBank Accession Number:**

NM\_006868

**GeneID (NCBI):**

11031

**UNIPROT ID:**

Q13636

**Full Name:**

RAB31, member RAS oncogene family

**Calculated MW:**

22 kDa

**Observed MW:**

22 kDa

**Purification Method:**

Antigen affinity purification

**Recommended Dilutions:**

WB 1:500-1:2000

IHC 1:50-1:500

## Applications

**Tested Applications:**

WB, IHC, ELISA

**Cited Applications:**

WB, IHC, IF, CoIP

**Species Specificity:**

human, mouse, rat

**Cited Species:**

human, mouse

**Note-IHC: suggested antigen retrieval with TE buffer pH 9.0; (\*) Alternatively, antigen retrieval may be performed with citrate buffer pH 6.0**

**Positive Controls:**

WB : HeLa cells, human brain tissue, K-562 cells

IHC : human colon tissue, human heart tissue

## Background Information

RAB 31, also named as RAB22b, belongs to small GTP-binding proteins of the RAB family. Rab31 localizes in the trans-Golgi network (TGN) and endosomes. It is required for transport of mannose 6-phosphate receptors (MPRs) from the trans-Golgi network (TGN) to endosomes. This antibody can bind RAB31 specifically, and not react RAB22a.

## Notable Publications

Author	Pubmed ID	Journal	Application
Denghui Wei	32958903	Cell Res	WB,IF
Hongyan Yu	36329997	Front Cardiovasc Med	WB
Chao-Tao Tang	30534536	Front Oncol	WB,IHC,CoIP

## Storage

**Storage:**

Store at -20°C. Stable for one year after shipment.

**Storage Buffer:**

PBS with 0.02% sodium azide and 50% glycerol pH 7.3.

Aliquoting is unnecessary for -20°C storage

For technical support and original validation data for this product please contact:

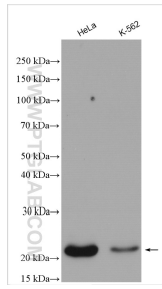
T: 4006900926

E: Proteintech-CN@ptglab.com

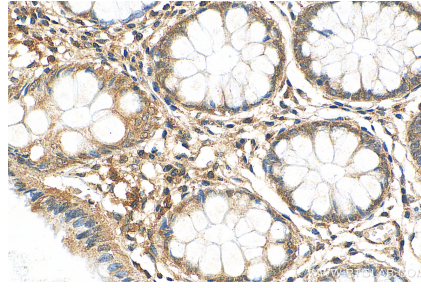
W: ptgcn.com

**This product is exclusively available under Proteintech Group brand and is not available to purchase from any other manufacturer.**

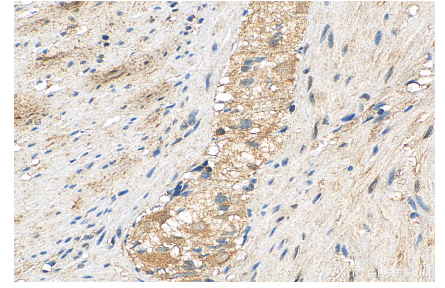
## Selected Validation Data



Various lysates were subjected to SDS PAGE followed by western blot with 16182-1-AP (RAB31-specific antibody) at dilution of 1:1000 incubated at room temperature for 1.5 hours.



Immunohistochemical analysis of paraffin-embedded human colon tissue slide using 16182-1-AP (RAB31-specific antibody) at dilution of 1:200 (under 40x lens). Heat mediated antigen retrieval with Tris-EDTA buffer (pH 9.0).



Immunohistochemical analysis of paraffin-embedded human colon tissue slide using 16182-1-AP (RAB31-specific antibody) at dilution of 1:200 (under 40x lens). Heat mediated antigen retrieval with Tris-EDTA buffer (pH 9.0).