

For Research Use Only

PDGFRL Polyclonal antibody

Catalog Number: 16217-1-AP **3 Publications**



Basic Information

Catalog Number: 16217-1-AP	GenBank Accession Number: BC010927	Purification Method: Antigen affinity purification
Size: 1000 µg/ml	GeneID (NCBI): 5157	Recommended Dilutions: WB 1:500-1:1000 IHC 1:20-1:200 IF/ICC 1:20-1:200
Source: Rabbit	UNIPROT ID: Q15198	
Isotype: IgG	Full Name: platelet-derived growth factor receptor-like	
Immunogen Catalog Number: AG9218	Calculated MW: 375 aa, 42 kDa	
	Observed MW: 42 kDa	

Applications

Tested Applications: WB, IHC, IF/ICC, ELISA	Positive Controls: WB : L02 cells, mouse liver tissue IHC : human liver cancer tissue, mouse liver tissue IF/ICC : L02 cells,
Cited Applications: WB, IHC	
Species Specificity: human, mouse, rat	
Cited Species: human	
Note-IHC: suggested antigen retrieval with TE buffer pH 9.0; (*) Alternatively, antigen retrieval may be performed with citrate buffer pH 6.0	

Background Information

Notable Publications

Author	Pubmed ID	Journal	Application
Qin Yang	38848147	Aging (Albany NY)	WB
Shuwen Kuang	38837427	Mol Carcinog	IHC
Michael T H Ng	38374174	Nat Commun	WB

Storage

Storage:
Store at -20°C. Stable for one year after shipment.
Storage Buffer:
PBS with 0.02% sodium azide and 50% glycerol pH 7.3.
Aliquoting is unnecessary for -20°C storage

For technical support and original validation data for this product please contact:

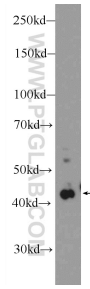
T: 4006900926

E: Proteintech-CN@ptglab.com

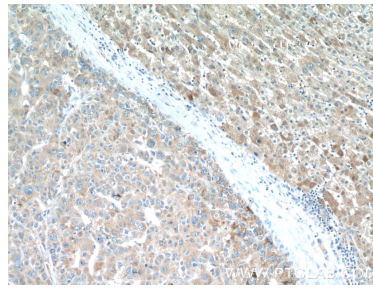
W: ptgcn.com

This product is exclusively available under Proteintech Group brand and is not available to purchase from any other manufacturer.

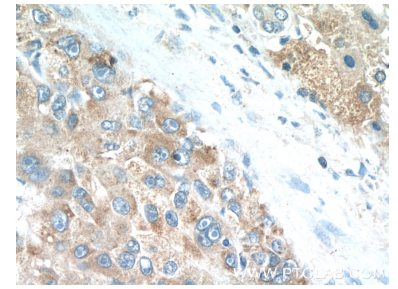
Selected Validation Data



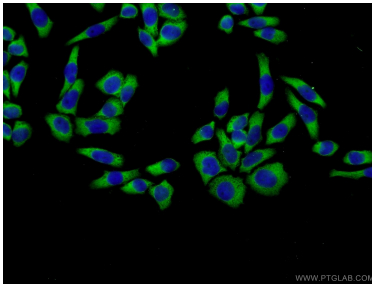
L02 cells were subjected to SDS PAGE followed by western blot with 16217-1-AP (PDGFRL Antibody) at dilution of 1:600 incubated at room temperature for 1.5 hours.



Immunohistochemical analysis of paraffin-embedded human liver cancer tissue slide using 16217-1-AP (PDGFRL Antibody) at dilution of 1:50 (under 10x lens).



Immunohistochemical analysis of paraffin-embedded human liver cancer tissue slide using 16217-1-AP (PDGFRL Antibody) at dilution of 1:50 (under 40x lens).



Immunofluorescent analysis of L02 cells using 16217-1-AP (PDGFRL antibody) at dilution of 1:50 and Alexa Fluor 488-conjugated AffiniPure Goat Anti-Rabbit IgG(H+L).