

For Research Use Only

# FOXS1 Polyclonal antibody

Catalog Number: 16234-1-AP **1 Publications**



## Basic Information

|  |  |  |
|--|--|--|
| <b>Catalog Number:</b><br>16234-1-AP       | <b>GenBank Accession Number:</b><br>BC013408 | <b>Purification Method:</b><br>Antigen affinity purification |
| <b>Size:</b><br>900 µg/ml                  | <b>GeneID (NCBI):</b><br>2307                | <b>Recommended Dilutions:</b><br>WB 1:500-1:1000             |
| <b>Source:</b><br>Rabbit                   | <b>UNIPROT ID:</b><br>O43638                 |  |
| <b>Isotype:</b><br>IgG                     | <b>Full Name:</b><br>forkhead box S1         |  |
| <b>Immunogen Catalog Number:</b><br>AG8957 | <b>Calculated MW:</b><br>330 aa, 35 kDa      |  |
|  | <b>Observed MW:</b><br>35 kDa                |  |

## Applications

|  |  |
|--|--|
| <b>Tested Applications:</b><br>WB, ELISA         | <b>Positive Controls:</b><br>WB : mouse liver tissue, rat liver tissue |
| <b>Cited Applications:</b><br>WB, IHC            |  |
| <b>Species Specificity:</b><br>human, mouse, rat |  |
| <b>Cited Species:</b><br>human                   |  |

## Background Information

### Notable Publications

| Author     | Pubmed ID | Journal | Application |
|------------|-----------|---------|-------------|
| Ruimin Ren | 38780613  | FASEB J | WB, IHC     |

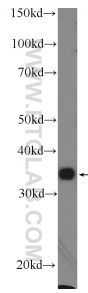
## Storage

**Storage:**  
Store at -20°C. Stable for one year after shipment.  
**Storage Buffer:**  
PBS with 0.02% sodium azide and 50% glycerol pH 7.3.  
Aliquoting is unnecessary for -20°C storage

For technical support and original validation data for this product please contact:  
T: 4006900926 E: Proteintech-CN@ptglab.com W: ptgcn.com

This product is exclusively available under Proteintech Group brand and is not available to purchase from any other manufacturer.

## Selected Validation Data



mouse liver tissue were subjected to SDS PAGE followed by western blot with 16234-1-AP (FOXS1 Antibody) at dilution of 1:600 incubated at room temperature for 1.5 hours.