

For Research Use Only

SAT2 Polyclonal antibody

Catalog Number: 16246-1-AP **2 Publications**



Basic Information

Catalog Number: 16246-1-AP	GenBank Accession Number: BC011751	Purification Method: Antigen affinity purification
Size: 700 µg/ml	GeneID (NCBI): 112483	Recommended Dilutions: WB 1:1000-1:4000 IHC 1:50-1:500
Source: Rabbit	UNIPROT ID: Q96F10	
Isotype: IgG	Full Name: spermidine/spermine N1-acetyltransferase family member 2	
Immunogen Catalog Number: AG9179	Calculated MW: 170 aa, 19 kDa	
	Observed MW: 19 kDa	

Applications

Tested Applications: IHC, WB, ELISA	Positive Controls: WB: rat liver tissue, IHC: human cervical cancer tissue,
Cited Applications: WB	
Species Specificity: human, mouse, rat	
Cited Species: mouse	

Note-IHC: suggested antigen retrieval with TE buffer pH 9.0; (*) Alternatively, antigen retrieval may be performed with citrate buffer pH 6.0

Background Information

Spermidine/spermine N1-acetyltransferase 2 (SAT2) is a short-lived polyamine catabolic enzyme inducible by polyamines and polyamine analogues. Human SAT2 contains the highly conserved acetyl-CoA-binding domain and displays coactivator function to enhance NF- κ B-dependent transcription and enhances TNF α -induced NF- κ B activity (PMID: 17875644). Human SAT1 and SAT2 proteins, which share 46% amino acid sequence identity and are clearly homologous, both interact with HIF-1 α and both promote the ubiquitination and degradation of HIF-1 α (PMID: 17011643).

Notable Publications

Author	Pubmed ID	Journal	Application
Yi Xian	28578006	Toxicol In Vitro	WB
Xiao-Hui Tang	36565851	Neuropharmacology	WB

Storage

Storage:
Store at -20°C. Stable for one year after shipment.
Storage Buffer:
PBS with 0.02% sodium azide and 50% glycerol pH 7.3.
Aliquoting is unnecessary for -20°C storage

For technical support and original validation data for this product please contact:

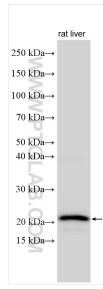
T: 4006900926

E: Proteintech-CN@ptglab.com

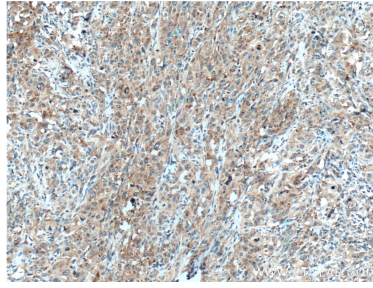
W: ptgcn.com

This product is exclusively available under Proteintech Group brand and is not available to purchase from any other manufacturer.

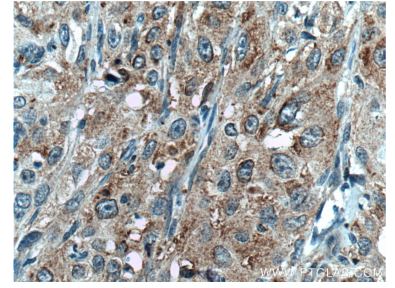
Selected Validation Data



Various lysates were subjected to SDS PAGE followed by western blot with 16246-1-AP (SAT2 antibody) at dilution of 1:2000 incubated at room temperature for 1.5 hours.



Immunohistochemical analysis of paraffin-embedded human cervical cancer tissue slide using 16246-1-AP (SAT2 antibody) at dilution of 1:100 (under 10x lens. Heat mediated antigen retrieval with Tris-EDTA buffer (pH 9.0).



Immunohistochemical analysis of paraffin-embedded human cervical cancer tissue slide using 16246-1-AP (SAT2 antibody) at dilution of 1:100 (under 40x lens. Heat mediated antigen retrieval with Tris-EDTA buffer (pH 9.0).