

For Research Use Only

PRKCDBP Polyclonal antibody

Catalog Number: 16250-1-AP

Featured Product

24 Publications



Basic Information

Catalog Number:

16250-1-AP

Size:

500 ug/ml

Source:

Rabbit

Isotype:

IgG

Immunogen Catalog Number:

AG9209

GenBank Accession Number:

BC011585

GeneID (NCBI):

112464

UNIPROT ID:

Q969G5

Full Name:

protein kinase C, delta binding protein

Calculated MW:

261 aa, 28 kDa

Observed MW:

35-40 kDa

Purification Method:

Antigen affinity purification

Recommended Dilutions:

WB 1:200-1:1000

IP 0.5-4.0 ug for 1.0-3.0 mg of total protein lysate

IHC 1:50-1:500

IF/ICC 1:10-1:100

Applications

Tested Applications:

WB, IHC, IF/ICC, IP, ELISA

Cited Applications:

WB, IHC, IF, IP

Species Specificity:

human, mouse, rat

Cited Species:

human, mouse, rat, pig

Note-IHC: suggested antigen retrieval with TE buffer pH 9.0; (*) Alternatively, antigen retrieval may be performed with citrate buffer pH 6.0

Positive Controls:

WB: mouse lung tissue, MCF-7 cells, HeLa cells

IP: A549 cells,

IHC: human normal colon,

IF/ICC: MCF-7 cells,

Background Information

Protein kinase C delta-binding protein (PRKCDBP) is a putative tumor suppressor in which alteration has been observed in several human cancers. It is a BRCA1-interacting protein, and may also be involved in DNA damage response and participate in BRCA1-mediated tumor suppression pathways. PKCdelta binds to the C-terminal half of PRKCDBP through the regulatory domain and phosphorylates it in vitro. In COS1 cells, the phosphorylation of over-expressed PRKCDBP is stimulated by 12-O-tetradecanoylphorbol-13-acetate and further enhanced by the over-expression of PKCdelta

Notable Publications

Author	Pubmed ID	Journal	Application
Victor J Hernandez	24069528	Elife	WB, IF
Takuya Taniguchi	27612189	PLoS One	WB
Zhiwei Liao	34476937	ACS Nano	WB

Storage

Storage:

Store at -20°C. Stable for one year after shipment.

Storage Buffer:

PBS with 0.02% sodium azide and 50% glycerol pH 7.3.

Aliquoting is unnecessary for -20°C storage

For technical support and original validation data for this product please contact:

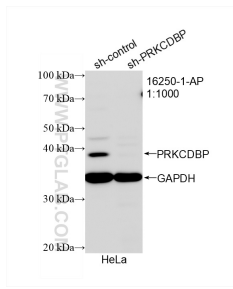
T: 4006900926

E: Proteintech-CN@ptglab.com

W: ptgcn.com

This product is exclusively available under Proteintech Group brand and is not available to purchase from any other manufacturer.

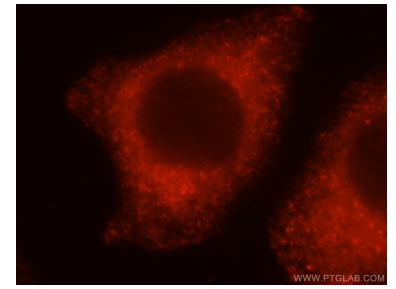
Selected Validation Data



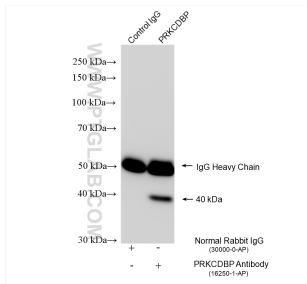
WB result of PRKCDBP antibody (16250-1-AP; 1:1000; incubated at room temperature for 1.5 hours) with sh-Control and sh-PRKCDBP transfected HeLa cells.



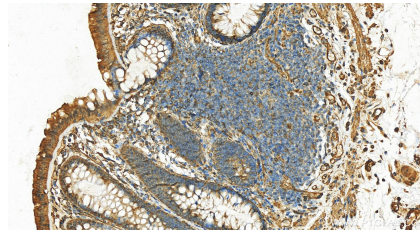
mouse lung tissue were subjected to SDS PAGE followed by western blot with 16250-1-AP (PRKCDBP antibody) at dilution of 1:400 incubated at room temperature for 1.5 hours.



Immunofluorescent analysis of MCF-7 cells, using PRKCDBP antibody 16250-1-AP at 1:25 dilution and Rhodamine-labeled goat anti-rabbit IgG (red).



IP result of anti-PRKCDBP (IP:16250-1-AP, 4 μ g; Detection:16250-1-AP 1:1000) with A549 cells lysate 640 μ g.



Immunohistochemical analysis of paraffin-embedded human normal colon slide using 16250-1-AP (PRKCDBP antibody) at dilution of 1:200 (under 20 \times lens). Heat mediated antigen retrieval with Tris-EDTA buffer (pH 9.0).