

For Research Use Only

# FAF2 Polyclonal antibody

Catalog Number: 16251-1-AP

Featured Product

18 Publications



## Basic Information

**Catalog Number:**

16251-1-AP

**Size:**

700 µg/ml

**Source:**

Rabbit

**Isotype:**

IgG

**Immunogen Catalog Number:**

AG9236

**GenBank Accession Number:**

BC014001

**GeneID (NCBI):**

23197

**UNIPROT ID:**

Q96CS3

**Full Name:**

Fas associated factor family member

2

**Calculated MW:**

445 aa, 53 kDa

**Observed MW:**

53 kDa

**Purification Method:**

Antigen affinity purification

**Recommended Dilutions:**

WB 1:1000-1:8000

IP 0.5-4.0 µg for 1.0-3.0 mg of total protein lysate

IHC 1:50-1:500

## Applications

**Tested Applications:**

IHC, IP, WB, ELISA

**Cited Applications:**

WB, IP, IF

**Species Specificity:**

human, mouse, rat

**Cited Species:**

human, bovine

**Note-IHC: suggested antigen retrieval with TE buffer pH 9.0; (\*) Alternatively, antigen retrieval may be performed with citrate buffer pH 6.0**

**Positive Controls:**

**WB:** HEK-293 cells, HepG2 cells, HeLa cells, mouse brain tissue, rat brain tissue, K-562 cells, MCF-7 cells, SH-SY5Y cells, U2OS cells

**IP:** mouse brain tissue,

**IHC:** human breast cancer tissue, mouse brain tissue

## Background Information

Protein ETEA (FAF2, or UBXD8) is a homolog to Fas-associated factor 1 (FAF1), which is involved in Fas-mediated apoptosis. ETEA protein directly interacts with and negatively regulates neurofibromin. ETEA contains both UBA and UBX domains and overexpression of ETEA downregulates neurofibromin in human cells. It may play a role in the translocation of terminally misfolded proteins from the endoplasmic reticulum lumen to the cytoplasm and their degradation by the proteasome. ETEA is highly expressed in peripheral blood of patients with atopic dermatitis (AD) compared to normal individuals, and may regulate the resistance to apoptosis that is observed in T cells and eosinophils of AD patients.

## Notable Publications

Author	Pubmed ID	Journal	Application
Ting Zhang	26424800	Mol Biol Cell	WB
Milton To	27881664	Mol Biol Cell	WB
Edmond Y Huang	29514927	Mol Biol Cell	WB

## Storage

**Storage:**

Store at -20°C. Stable for one year after shipment.

**Storage Buffer:**

PBS with 0.02% sodium azide and 50% glycerol pH 7.3.

Aliquoting is unnecessary for -20°C storage

For technical support and original validation data for this product please contact:

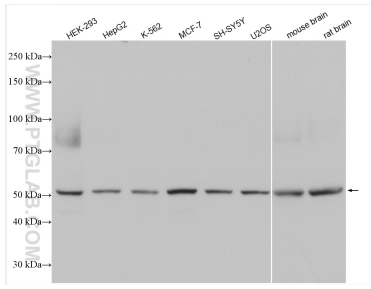
T: 4006900926

E: Proteintech-CN@ptglab.com

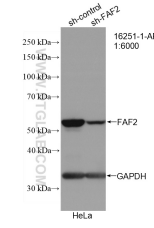
W: ptgcn.com

**This product is exclusively available under Proteintech Group brand and is not available to purchase from any other manufacturer.**

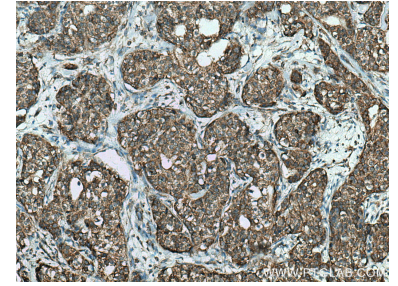
## Selected Validation Data



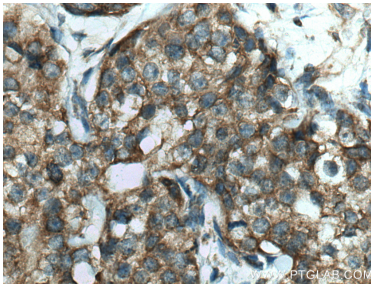
Various lysates were subjected to SDS PAGE followed by western blot with 16251-1-AP (FAF2 antibody) at dilution of 1:4000 incubated at room temperature for 1.5 hours.



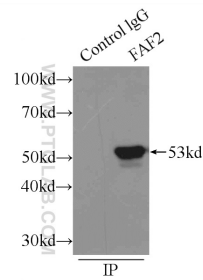
WB result of FAF2 antibody (16251-1-AP; 1:6000; incubated at room temperature for 1.5 hours) with sh-Control and sh-FAF2 transfected HeLa cells.



Immunohistochemical analysis of paraffin-embedded human breast cancer tissue slide using 16251-1-AP (FAF2 antibody) at dilution of 1:200 (under 10x lens). Heat mediated antigen retrieval with Tris-EDTA buffer (pH 9.0).



Immunohistochemical analysis of paraffin-embedded human breast cancer tissue slide using 16251-1-AP (FAF2 antibody) at dilution of 1:200 (under 40x lens). Heat mediated antigen retrieval with Tris-EDTA buffer (pH 9.0).



IP result of anti-FAF2 (IP:16251-1-AP, 3ug; Detection:16251-1-AP 1:1000) with mouse brain tissue lysate 500ug.