

For Research Use Only

MRPS36 Polyclonal antibody

Catalog Number: 16279-1-AP



Basic Information

Catalog Number:

16279-1-AP

Size:

400 µg/ml

Source:

Rabbit

Isotype:

IgG

Immunogen Catalog Number:

AG9359

GenBank Accession Number:

BC015966

GeneID (NCBI):

92259

UNIPROT ID:

P82909

Full Name:

mitochondrial ribosomal protein S36

Calculated MW:

103 aa, 11 kDa

Observed MW:

11 kDa

Purification Method:

Antigen affinity purification

Recommended Dilutions:

IHC 1:50-1:500

IF 1:50-1:500

Applications

Tested Applications:

IF/ICC, IHC, ELISA

Species Specificity:

human, mouse, rat

Note-IHC: suggested antigen retrieval with TE buffer pH 9.0; (*) Alternatively, antigen retrieval may be performed with citrate buffer pH 6.0

Positive Controls:

IHC: human lung cancer tissue, human liver cancer tissue

IF: HeLa cells,

Background Information

Storage

Storage:

Store at -20°C. Stable for one year after shipment.

Storage Buffer:

PBS with 0.02% sodium azide and 50% glycerol pH 7.3.

Aliquoting is unnecessary for -20°C storage

For technical support and original validation data for this product please contact:

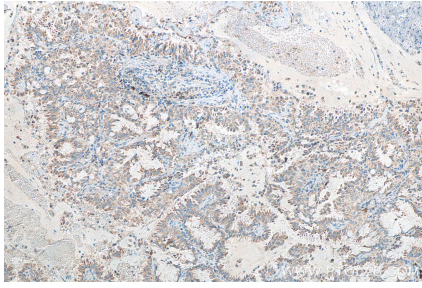
T: 4006900926

E: Proteintech-CN@ptglab.com

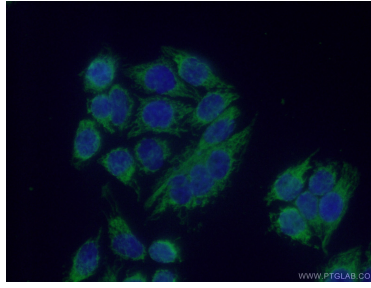
W: ptgcn.com

This product is exclusively available under Proteintech Group brand and is not available to purchase from any other manufacturer.

Selected Validation Data



Immunohistochemical analysis of paraffin-embedded human lung cancer tissue slide using 16279-1-AP (MRPS36 antibody) at dilution of 1:200 (under 10x lens). Heat mediated antigen retrieval with Tris-EDTA buffer (pH 9.0).



Immunofluorescent analysis of (4% PFA) fixed HeLa cells using 16279-1-AP (MRPS36 antibody) at dilution of 1:50 and Alexa Fluor 488-conjugated AffiniPure Goat Anti-Rabbit IgG(H+L).