

For Research Use Only

CEP70 Polyclonal antibody

Catalog Number: 16280-1-AP **2 Publications**



Basic Information

| | | |
|--|--|--|
| Catalog Number: 16280-1-AP | GenBank Accession Number: BC016050 | Purification Method: Antigen affinity purification |
| Size: 900 µg/ml | GeneID (NCBI): 80321 | Recommended Dilutions: WB 1:1000-1:4000 IF/ICC 1:50-1:500 |
| Source: Rabbit | UNIPROT ID: Q8NHQ1 | |
| Isotype: IgG | Full Name: centrosomal protein 70kDa | |
| Immunogen Catalog Number: AG9365 | Calculated MW: 597 aa, 70 kDa | |
| | Observed MW: 25-28 kDa | |

Applications

| | |
|--|--|
| Tested Applications: WB, IF/ICC, ELISA | Positive Controls: WB : human placenta tissue, mouse testis tissue, PC-3 cells IF/ICC : HeLa cells, |
| Cited Applications: WB, IP, IF | |
| Species Specificity: human, mouse | |
| Cited Species: human, mouse | |

Background Information

CEP70, also named as Centrosomal protein of 70 kDa, is a 597 amino acid protein, which directly interacts with tubulin-gamma; this interaction determines centrosomal localization. CEP70 plays a role in the organization of both preexisting and nascent microtubules in interphase cells. During mitosis, CEP70 is required for the organization and orientation of the mitotic spindle. CEP70 exists some isoforms with MW 70, 67, 65 and 25 kDa.

Notable Publications

| Author | Pubmed ID | Journal | Application |
|---------------|-----------|-----------------------------|-------------|
| Xiaqing Zhang | 38590928 | Cell Insight | WB,IP |
| Tiechao Ruan | 36967801 | Front Endocrinol (Lausanne) | IF |

Storage

Storage:
Store at -20°C. Stable for one year after shipment.
Storage Buffer:
PBS with 0.02% sodium azide and 50% glycerol pH 7.3.
Aliquoting is unnecessary for -20°C storage

For technical support and original validation data for this product please contact:

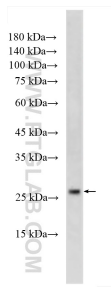
T: 4006900926

E: Proteintech-CN@ptglab.com

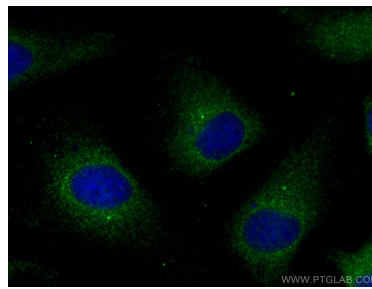
W: ptgcn.com

This product is exclusively available under Proteintech Group brand and is not available to purchase from any other manufacturer.

Selected Validation Data



human placenta tissue were subjected to SDS PAGE followed by western blot with 16280-1-AP (CEP70 antibody) at dilution of 1:2000 incubated at room temperature for 1.5 hours.



Immunofluorescent analysis of (-20°C Methanol) fixed HeLa cells using CEP70 antibody (16280-1-AP) at dilution of 1:200 and CoraLite®488-Conjugated AffiniPure Goat Anti-Rabbit IgG(H+L).