

For Research Use Only

MRPS31 Polyclonal antibody

Catalog Number: 16288-1-AP

Featured Product

1 Publications



Basic Information

Catalog Number:

16288-1-AP

Size:

900 ug/ml

Source:

Rabbit

Isotype:

IgG

Immunogen Catalog Number:

AG9434

GenBank Accession Number:

BC022045

GeneID (NCBI):

10240

UNIPROT ID:

Q92665

Full Name:

mitochondrial ribosomal protein S31

Calculated MW:

395 aa, 45 kDa

Observed MW:

38 kDa

Purification Method:

Antigen affinity purification

Recommended Dilutions:

WB 1:1000-1:6000

IHC 1:400-1:1600

IF/ICC 1:200-1:800

Applications

Tested Applications:

WB, IHC, IF/ICC, ELISA

Cited Applications:

WB

Species Specificity:

human, mouse, rat

Cited Species:

human

Note-IHC: suggested antigen retrieval with TE buffer pH 9.0; (*) Alternatively, antigen retrieval may be performed with citrate buffer pH 6.0

Positive Controls:

WB : HeLa cells, Jurkat cells, HepG2 cells, MCF-7 cells

IHC : human stomach cancer tissue,

IF/ICC : HeLa cells,

Background Information

Notable Publications

Author	Pubmed ID	Journal	Application
Juliette Pulman	30566640	Hum Mol Genet	WB

Storage

Storage:

Store at -20°C. Stable for one year after shipment.

Storage Buffer:

PBS with 0.02% sodium azide and 50% glycerol pH 7.3.

Aliquoting is unnecessary for -20°C storage

For technical support and original validation data for this product please contact:

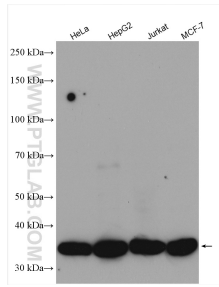
T: 4006900926

E: Proteintech-CN@ptglab.com

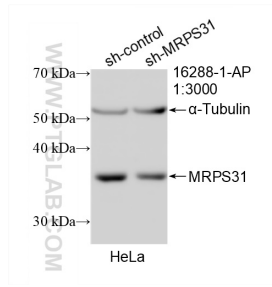
W: ptgcn.com

This product is exclusively available under Proteintech Group brand and is not available to purchase from any other manufacturer.

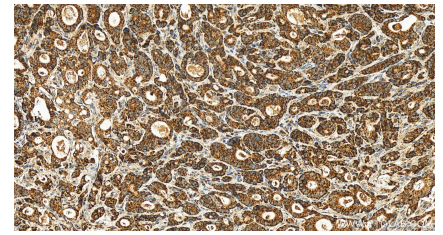
Selected Validation Data



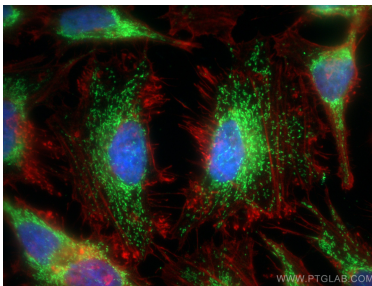
Various lysates were subjected to SDS PAGE followed by western blot with 16288-1-AP (MRP531 antibody) at dilution of 1:3000 incubated at room temperature for 1.5 hours.



WB result of MRP531 antibody (16288-1-AP; 1:400; incubated at room temperature for 1.5 hours) with sh-Control and sh-MRP531 transfected HeLa cells.



Immunohistochemical analysis of paraffin-embedded human stomach cancer tissue slide using 16288-1-AP (MRP531 antibody) at dilution of 1:800 (under 20x lens). Heat mediated antigen retrieval with Tris-EDTA buffer (pH 9.0).



Immunofluorescent analysis of (4% PFA) fixed HeLa cells using MRP531 antibody (16288-1-AP) at dilution of 1:400 and CoraLite® 488-Conjugated AffiniPure Goat Anti-Rabbit IgG(H+L), CL594-Phalloidin (red).